

CPS FAMILY AND INVESTIGATIVE ASSESSMENTS POLICY, PROTOCOL, AND GUIDANCE

Purpose

The primary goal of CPS Assessments is to protect children from further maltreatment and to support and improve parental/caregiver abilities to assure a safe and nurturing home for each child. If conditions described in the intake report would, if true, meet the legal definition of child abuse, neglect, or dependency and the alleged perpetrator is a parent, guardian, custodian, or caretaker by statutory definition and if the alleged victim is a child under the age of 18 years of age, the county child welfare services agency where the child resides, or is found, is required to initiate a CPS Assessment of all children residing in the home. The task of the CPS Assessment is to determine if the child(ren) is/are abused, neglected, and/or dependent, or if the family needs services, and what level of intervention is necessary to assure safety.

The purpose of the CPS Assessment is to gather sufficient information through interviews, observations and, when appropriate, analysis of reports, medical records, photographs, etc. to determine if:

- Child maltreatment occurred;
- There is a risk of future maltreatment and the level of that risk;
- The child is safe within the home and, if not, what interventions can be implemented that will ensure the child's protection and maintain the family unit intact if reasonably possible;
- Ongoing agency services are needed to reduce the risk of maltreatment occurring in the future; and
- Out-of-home placement is necessary to protect the child from harm.

Table of Contents

Description	Page
<u>Policy & Legal Basis</u>	4
<u>Required Timeframes</u>	9
<u>Protocol & Guidance</u>	
<u>Checking Agency Records</u>	11
<u>Initiation</u>	13
<u>Unable to Locate</u>	15
<u>Safety Planning</u>	16
<u>New Reports or Allegations Received During an Open CPS Assessment</u>	16
<u>Safety Assessment</u>	18
<u>Use of Temporary Safety Providers</u>	22
<u>Contacts During the Assessment</u>	26
<u>Initial Contacts with Household Members</u>	26
<u>Home Visits</u>	31
<u>Non-Resident Parent</u>	33
<u>Identifying/Building the Family's Safety Network</u>	34
<u>Follow-Up Visits & Contacts with the Family</u>	35
<u>Two-Level Decision Making / Role of Supervisor</u>	38
<u>Child Medical Evaluation Program (CMEP)/ Clinical Assessment of Protective Parenting (CAPP)</u>	39
<u>Interference with a CPS Assessment</u>	47
<u>Decision Making and Case Closure</u>	49
<u>Using the Assessment Tools</u>	49

Table of Contents

Description	Page
<u>Making the Case Decision</u>	50
<u>Notifications</u>	52
<u>Special Categories of Cases Requiring a CPS Assessment</u>	53
<u>CPS Assessments Involving More than One County</u>	53
<u>CPS Assessments of Out-of-Home Placements</u>	53
<u>Malicious CPS Reports</u>	53
<u>Medical Neglect of Infants with Life-Threatening Conditions</u>	54
<u>Substance Affected Infant</u>	56
<u>Safe Surrender</u>	64
<u>Human Trafficking</u>	68
<u>Responding to Missing and Abducted Children</u>	70
<u>Vulnerable Juveniles</u>	78
<u>Assessment Track: Family and Investigative Assessments</u>	80
<u>Family & Investigative Assessments: Definitions & When to Use Each Approach</u>	81
<u>Switching Approaches / Tracks</u>	82
<u>Family Assessment</u>	83
<u>Investigative Assessment</u>	87
<u>Responsible Individual List</u>	89
<u>Documentation</u>	

Policy & Legal Basis

Policy	Legal Basis
<p>CPS Assessments are legally mandated, non-voluntary services for:</p> <ul style="list-style-type: none"> ○ Children who are alleged victims of abuse, neglect, and/or dependency due to the action of, or lack of protection by, the child’s parent/guardian/custodian or caregiver; and ○ The household family members of such children. <p>When a report of abuse, neglect, or dependency is received, the director of the county child welfare services agency must make a prompt and thorough assessment to determine whether protective services should be provided, or a petition filed.</p> <p>Sufficient information must be gathered to assess:</p> <ul style="list-style-type: none"> ○ The safety of the child and the potential risk of harm; ○ What actions might be needed to assure the safety of the child; ○ Whether the facts identified through a structured gathering of information support the substantiation that a child is abused, neglected, and/or dependent as defined by statute, and the extent of the abuse, neglect, and/or dependency; ○ If through observation and the gathering of information it is determined that due to the level of safety and risk, the family is in need of services; and ○ Whether the specific environment in which the child is found meets the child’s need for care and protection. 	<p>The director of each county department of social services is required by law to establish protective services for children alleged to be abused, neglected, or dependent.</p> <p><u>N.C.G.S. §7B-300</u> states: “The director of the department of social services in each county of the State shall establish protective services for juveniles alleged to be abused, neglected, or dependent. Protective services shall include the screening of reports, the performance of an assessment using either a Family Assessment response or an Investigative Assessment response, casework, or other counseling services to parents, guardians, or other caretakers as provided by the director to help the parents, guardians, or other caretakers and the court to prevent abuse or neglect, to improve the quality of child care, to be more adequate parents, guardians, or caretakers, and to preserve and stabilize family life.”</p> <p><u>N.C.G.S. §7B-302</u> states: “When a report of abuse, neglect, or dependency is received, the director of the department of social services shall make a prompt and thorough assessment, using either a Family Assessment response or an Investigative Assessment response, in order to ascertain the facts of the case, the extent of the abuse or neglect, and the risk of harm to the juvenile, in order to determine whether protective services should be provided or the complaint filed as a petition.”</p>

Policy & Legal Basis

Policy	Legal Basis
<p>To assess reports of abuse, neglect, and/or dependency, each county child welfare services agency may use either:</p> <ul style="list-style-type: none"> ○ The Family Assessment Response; or ○ The Investigative Assessment Response. <p>Except for certain reports that must be taken as an Investigative Assessment, it will be up to each county child welfare services agency director, or their designee, to choose which response will be used to assess reports of abuse, neglect, and/or dependency.</p> <p>When a report of abuse, neglect, and/or dependency is received regarding a non-institutional setting, all children living in the home must be considered and assessed as victim children, whether they are named in the report. If a report is received on an institutional setting, the circumstances of other children who were subjected to the alleged perpetrator's care and supervision must be assessed to determine whether they require protective services or immediate removal.</p>	<p><u>N.C.G.S. §7B-101</u> provides the legal definitions of abused, neglected, and dependent juveniles:</p> <p>Section 106 (b)(2)(B)(xviii) of the Child Abuse Prevention and Treatment Act (CAPTA) requires that the county child welfare services agency notify the individual of the complaints or allegations made against him or her at the first time of contact, regardless of how that contact is made. This is dependent upon the county child welfare worker being certain that he or she is speaking to the person who is named in the report. If the county child welfare worker cannot be certain to whom he or she is speaking, specific allegations shall not be discussed to protect the confidentiality of the family.</p> <p><u>N.C.G.S. §7B-302(a)</u> states: “The assessment and evaluation shall include a visit to the place where the juvenile resides, except when the report alleges abuse or neglect in a childcare facility as defined in Article 7 of Chapter 110 of the General Statutes.”</p> <p><u>N.C.G.S. §7B-302 (b)</u> states: “When a report of a juvenile's death as a result of suspected maltreatment or a report of suspected abuse, neglect, or dependency of a juvenile in a non-institutional setting is received, the director of the department of social services shall immediately ascertain if other juveniles live in the home, and, if so, initiate an assessment in order to determine whether they require protective services or whether immediate removal of the juveniles from the home is necessary for their protection. When a report of a juvenile's death as a result of maltreatment or a report of suspected abuse,</p>

Policy & Legal Basis

Policy	Legal Basis
	<p>neglect, or dependency of a juvenile in an institutional setting such as a residential child care facility or residential educational facility is received, the director of the department of social services shall immediately ascertain if other juveniles remain in the facility subject to the alleged perpetrator's care or supervision, and, if so, assess the circumstances of those juveniles in order to determine whether they require protective services or whether immediate removal of those juveniles from the facility is necessary for their protection.”</p> <p><u>N.C.G.S. §7B-302 (e)</u> states: “In performing any duties related to the assessment of the report or the provision or arrangement for protective services, the director may consult with any public or private agencies or individuals, including the available State or local law enforcement officers who shall assist in the assessment and evaluation of the seriousness of any report of abuse, neglect, or dependency when requested by the director. The director or the director's representative may make a written demand for any information or reports, whether confidential, that may in the director's opinion be relevant to the assessment or provision of protective services. Upon the director's or the director's representative's request and unless protected by the attorney-client privilege, any public or private agency or individual shall provide access to and copies of this confidential information and these records to the extent permitted by federal law and regulations. If a custodian of criminal investigative information or records believes that release of the information will jeopardize the right of the State to prosecute a defendant or the right of a defendant to receive a fair trial or will undermine an ongoing or future investigation, it may seek an order from a court of competent jurisdiction to prevent disclosure of the information. In such an action, the custodian of the records shall have the burden of showing by a</p>

Policy & Legal Basis

Policy	Legal Basis
	<p>preponderance of the evidence that disclosure of the information in question will jeopardize the right of the State to prosecute a defendant or the right of a defendant to receive a fair trial or will undermine an ongoing or future investigation. Actions brought pursuant to this paragraph shall be set down for immediate hearing, and subsequent proceedings in the actions shall be accorded priority by the trial and appellate courts.”</p> <p><u>N.C.G.S. §7B-302(h)</u> states: “The director or the director's representative may not enter a private residence for assessment purposes without at least one of the following:</p> <ol style="list-style-type: none"> (1) The reasonable belief that a juvenile is in imminent danger of death or serious physical injury. (2) The permission of the parent or person responsible for the juvenile's care. (3) The accompaniment of a law enforcement officer who has legal authority to enter the residence. (4) An order from a court of competent jurisdiction.” <p><u>N.C.G.S. §7B-306</u> states: “The prosecutor shall review the director's determination that a petition should not be filed within 20 days after the person making the report is notified. The review shall include conferences with the person making the report, the protective services worker, the juvenile, if practical, and other persons known to have pertinent information about the juvenile or the juvenile's family. At the conclusion of the conferences, the prosecutor may affirm the decision made by the director, may request the appropriate local</p>

Policy & Legal Basis

Policy	Legal Basis
	<p>law enforcement agency to investigate the allegations, or may direct the director to file a petition."</p> <p><u>North Carolina Administrative Rule 10A NCAC 70A .0105</u> states:</p> <p>"Initiation of an investigation is defined as having face-to-face contact with the alleged victim child or children. If there is not such face-to-face contact within the prescribed time, the case record shall contain documentation to explain why such contact was not made and what other steps were taken to assess the risk of harm to the child or children.</p> <p>(e) When the director is unable to initiate the investigation within the prescribed time, as indicated in Paragraph (d) of this Rule, because the alleged victim child or children cannot be located, the director shall make diligent efforts to locate the alleged victim child or children until such efforts are successful or until the director concludes that the child or children cannot be located. Diligent efforts shall include, but not be limited to, visits to the child's or children's address at different times of the day and on different days. All efforts to locate the child or children shall be documented in the case record."</p>

Required Timeframes

<ul style="list-style-type: none"> ● Time clock for initiation begins 	<ul style="list-style-type: none"> ● At the time the report is received by any NC county child welfare services agency
Upon screen-in of report	
<ul style="list-style-type: none"> ● Within Response Time (Immediate, 24 hours, or 72 hours) 	<ul style="list-style-type: none"> ● Initiation = Face-to-face interviews with all victim children ● See Initiation protocol for exceptions to interviewing sequence (e.g., domestic violence)
<ul style="list-style-type: none"> ● Same Day Initiated with Children 	<ul style="list-style-type: none"> ● Face-to-face interviews with parents/caretakers ● Completion of Safety Assessment ● Home visit
<ul style="list-style-type: none"> ● Records Check (criminal, CPS history, etc.) - Promptly and ongoing as new information is received 	
Ongoing during assessment	
<ul style="list-style-type: none"> ● Contacts with parent(s) and child(ren). See Contacts During the Assessment Section – frequency determined by risk level (at least 7 calendar days apart or at additional intervals to assure child’s safety) ● Collateral contacts – At least two during assessment ● Visit at home where child(ren) resides (with parent/caretaker or Temporary Safety Provider) 	
<ul style="list-style-type: none"> ● Current within 7 calendar days 	<ul style="list-style-type: none"> ● Documentation of any assessment activity or action
If/when case involves a Temporary Safety Provider	
<ul style="list-style-type: none"> ● Prior to placement of child(ren) with safety provider 	<ul style="list-style-type: none"> ● Meet with family to develop a safety plan and hold a CFT ● Complete background checks for all household members 16 years or older ● Complete Initial Safety Provider Assessment and approved by supervisor
If/when county files petition for custody	
<ul style="list-style-type: none"> ● Prior to filing petition 	<ul style="list-style-type: none"> ● Hold a CFT. See “File a Petition” and “Preparing Parents and Child(ren)” in Cross Function Topics in the NC Child Welfare manual.
<ul style="list-style-type: none"> ● Prior to placing child(ren) out of the home 	<ul style="list-style-type: none"> ● Carry out diligent efforts to identify and notify adult relatives and other persons with legal custody of a sibling of the juvenile. When it is safe and appropriate children must be placed with relatives.

Required Timeframes

	<ul style="list-style-type: none"> ● Locate placement in child(ren)’s best interest, consider relatives/kin for placement (complete Initial Provider Assessment), ICWA considerations, Mexican Heritage inquiry, address educational stability (Best Interest Determination)
<ul style="list-style-type: none"> ● At time of child(ren) placement 	<ul style="list-style-type: none"> ● Provide to placement provider: Verification of Custody Order (DSS-5760), all available child information, & county child welfare services agency contact information
<p>Note: After a child is placed in the custody of the county social service agency, all subsequent actions are Permanency Planning functions and can be found in the <u>Permanency Planning manual</u> under Required Timeframes. Each county can determine who is responsible for the completion of each function.</p>	
<p>Case Closure Requirements</p>	
<ul style="list-style-type: none"> ● Within 45 calendar days of CPS report, prior to or at time of case closure 	<ul style="list-style-type: none"> ● Risk Assessment & Strengths and Needs Assessment ● Case Decision Summary
<ul style="list-style-type: none"> ● Within 3 calendar days following case decision of Substantiation or Child Protective Services Needed 	<ul style="list-style-type: none"> ● A referral to CDSA for any child under the age of three must occur when concerns are identified on the Family Strengths and Needs Assessment, Child Characteristics (S6).
<ul style="list-style-type: none"> ● In an expeditious manner after case decision 	<ul style="list-style-type: none"> ● Notification letters, RIL notification (if applicable)
<ul style="list-style-type: none"> ● Within 7 calendar days after case decision of Substantiation or Child Protective Services Needed 	<ul style="list-style-type: none"> ● For In-Home cases, face-to-face contact with family regarding case decision ● Complete all documentation, closing forms, and case file.
<p>Guidance</p>	
	<p>These timeframes are guidelines and indicate the maximum time limit for initiating CPS Assessments. Each referral is evaluated to determine the perceived risk to the child's safety, the urgency of the situation, and the priority of the report.</p>

Checking Agency Records

Protocol – What you must do	Guidance – How you should do it
<p>As a part of a thorough CPS Assessment, the county child welfare services agency must:</p> <ul style="list-style-type: none"> ● Review all county Child Welfare Services records for previous contact with the family in NC FAST or by contacting a county child welfare agency; ● Conduct a Central Registry (CR) check or search NC FAST services history for any previous reports of abuse, neglect, or dependency regarding the alleged victim child(ren), unless: <ul style="list-style-type: none"> ○ The county child welfare services agency has conducted such a check in the 60 calendar days prior to the new report, or ○ The agency is providing ongoing children's services to the family; ● Check criminal records for all case participants who are 16 years of age or older and live in the home; and ● Determine if there is a need to request 911 call logs on the relevant address(es) and review obtained information. ● Documentation to support the completion of these activities. 	<p>Documentation of activities is on the structured documentation tool (DSS-5010) or in NC FAST on the CPS Assessment Documentation Tool.</p> <p>Review of CPS history, including the CR check, is important because it provides information that will help the county child welfare worker determine if the reported situation represents a pattern of abuse and/or neglect.</p> <p>ASSIST can be used to complete background checks (it is particularly valuable for afterhours reports and reports with a short response timeframe) and supports use of the following systems:</p> <ul style="list-style-type: none"> ● Criminal checks. ACIS provides any criminal charges or convictions in North Carolina through the AOC data base; and ● CPS Central Registry checks. <p>For some cases, it may be appropriate to complete a criminal record check on an individual who does not reside in the home or request 911 call logs regarding an address that is not the current location of the family home to assess child safety and risk.</p> <p>A request for 911 call logs can:</p> <ul style="list-style-type: none"> ● Provide additional information regarding child safety, especially when there are allegations of domestic violence; and ● Inform decisions regarding worker safety. <p>All county child welfare agencies should have staff trained to conduct criminal record checks on foster and adoptive parents, potential county child welfare workers, parents, guardians, custodians, caretakers under CPS Assessment, caretakers responsible for children in county child welfare custody, and on possible temporary safety providers.</p>

Checking Agency Records

Protocol – What you must do	Guidance – How you should do it
<p>DOMESTIC VIOLENCE</p> <p>Assessments with allegations of domestic violence, require activities that must occur prior to the initial contact with the family and include but are not limited to:</p> <ul style="list-style-type: none"> ● Contact the Administrative Office of the Courts (or county Clerk of Superior Court) and/or complete a search of VCAP to determine if a domestic violence protective order exists; and ● Contact local law enforcement agencies and/or conduct a criminal record check on the alleged perpetrator of domestic violence. 	<p>Access to the ACIS system allows county child welfare agencies to immediately determine the legal status of all adults with or without criminal records and/or pending charges in North Carolina.</p> <p><u>Civil Case Processing System (VCAP)</u></p> <p>The VCAP system contains information on civil actions that range from case initiation to disposition. This system should be used by county child welfare agencies when checking the existence of custody orders, domestic violence protective orders, and/or child support orders. VCAP does not provide a narrative on the conditions of a civil order.</p> <p>These activities must be completed as soon as possible during the CPS Assessment; however, if these activities can't be completed before the initial contact with the family, documentation should reflect the rationale.</p>

Initiation

Protocol – What you must do	Guidance – How you should do it
<p>Initiation of a CPS Assessment must include face-to-face interviews with all children living in the home.</p> <p>All reports accepted for a CPS Assessment must:</p> <ul style="list-style-type: none"> • Be assessed promptly through individual face-to-face interviews with all alleged victim children within the statutory time requirements or include documentation to reflect diligent efforts made to see the child within these timeframes. <ul style="list-style-type: none"> ○ Interviews with children must include questions regarding the allegations, be individual and separate from the parent/caretaker for at least part of the interview. <p>See Family Assessment and Investigative Assessment for more protocol and guidance for initiation, specifically regarding the sequence of contact.</p> <p>ASSESSMENTS WITH ALLEGATIONS OF DOMESTIC VIOLENCE</p> <p>CPS Assessments must be initiated by first contacting the non-offending parent/adult victim outside of the presence of the alleged perpetrator. The children must not be interviewed in the presence of the alleged perpetrator.</p> <p>The sequence of the interviews for a Family Assessment or Investigative Assessment without allegations of abuse but with allegations of domestic violence must be as follows:</p> <ol style="list-style-type: none"> 1. Non-offending parent/adult victim; 2. Children; 3. Alleged perpetrator of domestic violence. <p>Do not disclose information obtained from the non-offending parent/adult victim concerning the source of information or any information concerning the non-offending parent/adult victim’s safety plan during the interview with the child.</p>	<p>When interviewing each child, the county child welfare worker should use interviewing strategies and techniques appropriate to the child’s developmental level. Workers should use their professional judgment in deciding how to interview a child.</p> <p>The Children’s Domestic Violence Assessment Tool (DSS-5237) contains scaled assessment questions and should be used to support the determination of the safety and risk factors on assessments with allegations of domestic violence.</p> <p>Every child reacts differently when exposed to domestic violence. Some children develop debilitating conditions while others show no negative effects. As a result, it is important to interview the children regarding their involvement and/or exposure to domestic violence, as well as their general safety</p>

Initiation

Protocol – What you must do	Guidance – How you should do it
<p>POSTPONEMENT OF THE CHILD(REN) INTERVIEW</p> <p>The safety of children is closely linked to the safety of the non-offending parent/adult victim. The county child welfare worker and the supervisor must determine if the interview of the child(ren) must be delayed until safety can be achieved when:</p> <ul style="list-style-type: none"> ● The interview with the non-offending parent/adult victim and the completion of the Safety Assessment indicate extreme risk; or ● The children have learned to survive by identifying with the alleged perpetrator of domestic violence (i.e., cannot keep confidential information from the alleged perpetrator of domestic violence). <p>When this occurs, documentation must reflect:</p> <ul style="list-style-type: none"> ● What steps were taken to identify the risk of harm to the child; and ● The reasons for the postponement. <p>Once safety is assured, all required face-to-face interviews must be conducted. Postponing the interview with the child will be the exception and not the rule.</p> <p>Justification for not complying with the above requirements of initiation must be:</p> <ul style="list-style-type: none"> ● Approved by a county child welfare services agency supervisor; and ● Documented. <p>METHAMPHETAMINE</p> <p>Assessments involving allegations of children exposed to methamphetamine or other drug manufacturing laboratories: See “Drug Endangered Children” in Cross Function Topics in the NC Child Welfare manual.</p>	<p>and well-being. It is important to recognize that older children are more likely to minimize reports of parental fighting. Younger children may be more spontaneous and less guarded with the information they share.</p> <p>Investigative Assessments of abuse with DV allegations should consider the safety of the non-offending parent and the child(ren) when initiating.</p>

Unable to Locate

Protocol – What you must do	Guidance – How you should do it
<p>When the agency is unable to initiate the CPS Assessment within the prescribed time because the alleged victim child cannot be located, the director or their designees must make diligent efforts to locate the child until such efforts are successful or until the county child welfare services agency concludes that the child cannot be located. The determination that the child cannot be located must be approved by a county child welfare services agency supervisor.</p> <p>The decision to discontinue diligent efforts must be approved by the county child welfare supervisor.</p>	<p>If the county child welfare services agency concludes that there is insufficient information to initiate or the child cannot be located, the report may be administratively closed.</p>

Safety Planning

Protocol – What you must do	Guidance – How you should do it
<p><u>NEW REPORTS OR ADDITIONAL ALLEGATIONS DURING AN OPEN CPS ASSESSMENT</u></p> <p>The intent of safety planning is to reach an agreed upon plan with the family that imposes the lowest level of intrusiveness possible while assuring a child’s safety.</p> <p>When any high-risk situation is alleged, the county child welfare services agency must immediately see the children to assess the situation and implement safety measures to protect the child(ren).</p> <p>All allegations, whether contained in the original report or uncovered during the CPS Assessment, must:</p> <ul style="list-style-type: none"> • Be thoroughly assessed; and • If there are any safety or risk of harm concerns a safety assessment must address the concerns. <p>If the county child welfare services agency uncovers new allegations that were not included in the in the original report during initiation, the child welfare worker must:</p> <ul style="list-style-type: none"> • Assess the new allegations along with the reported allegations within the appropriate response time; • Address the new allegations during review of the Safety Assessment, including development of a Temporary Parental Safety Agreement for identified safety threats; and • Add the information from the new allegations to documentation and consider it as part of the case decision. 	<p>The primary concern of Child Welfare Services is protecting children. At no time should a county child welfare worker leave a child in unsafe circumstances.</p> <p>For example, if during initiation the county child welfare services agency discovers new allegations or incidents, the county child welfare services agency would:</p> <ul style="list-style-type: none"> • Assess the new allegations along with the reported allegations within the appropriate response time; and • Address these allegations during review of the Safety Assessment, including development of a Temporary Parental Safety Agreement for identified safety threats. <p>For more protocol and guidance related to new information or allegations please see “Multiple Reports Involving the Same Child or Family” in Intake in the NC Child Welfare manual.</p>

Safety Planning

Protocol – What you must do	Guidance – How you should do it
<p>If the county child welfare services agency is contacted and provided with information regarding the same allegations and incidents that were in the initial report and already being assessed:</p> <ul style="list-style-type: none"> • The information must be documented as a new CPS Intake in NC FAST or on the structured intake tool and screened. • Such circumstances do not require an initiation or a new Safety Assessment. <p>If the county child welfare services agency is contacted and provided with information that is not regarding the same allegations and incidents in the initial report, the county child welfare services agency must:</p> <ul style="list-style-type: none"> • Treat the information as a new CPS Intake in NC FAST or on the structured intake tool and screened; and • Respond within appropriate timeframes to assess the safety of the child. <p>If there is a new incident during the course of an open assessment, the county child welfare worker must:</p> <ul style="list-style-type: none"> • Treat the information as a new CPS Intake in NC FAST or on the structured intake tool; • Respond within appropriate timeframes to assess the safety of the child; and • Consider it as part of one case decision. <p>Throughout the CPS Assessment, the county child welfare services agency must continue to monitor for safety, current and/or future risk of maltreatment, and assess for child well-being.</p>	<p>G.S §7B-307 directs the county to also notify the military authority associated with the alleged perpetrator</p>

Safety Planning

Protocol – What you must do	Guidance – How you should do it
<p>If the county child welfare services agency discovers information that necessitates law enforcement involvement, the county child welfare services agency must:</p> <ul style="list-style-type: none"> • Give immediate verbal notification to the District Attorney (DA) or their designee; • Send subsequent written notification to the District Attorney within 48 hours; • Give immediate verbal notification to the appropriate local law enforcement (LE) agency; and • Send subsequent written notification to the appropriate local law enforcement agency within 48 hours. • Notify the military authority associated with the alleged perpetrator <p>The notification to the DA/LE agency or military authority must include:</p> <ul style="list-style-type: none"> • The name and address of the child and of the parents; • The perpetrator when this person is different from the parents or caretaker; • Whether the abuse was physical, sexual; • The dates that the CPS Assessment was initiated and that the evidence of abuse was found; • What evidence of abuse was found; and • What plan to protect the child has been developed and what is being done to implement it. <p>"Evidence of abuse" means information including but not limited to:</p> <ul style="list-style-type: none"> • Credible statements of the child, parents, and/or other persons; • Observations of the county child welfare worker; • Records; 	

Safety Planning

Protocol – What you must do	Guidance – How you should do it
<ul style="list-style-type: none"> • Photographs; • X-rays; or • Medical reports. <p>All information gathered during the assessment process must be incorporated into one case decision and reported to the Central Registry through NC FAST or using the CPS Application (DSS-5104).</p> <p><u>SAFETY ASSESSMENT</u></p> <p>A North Carolina Safety Assessment (DSS-5231) must be developed during CPS Assessments to address the safety issues and the caretaker’s capacity to ensure safety for the children. The Safety Assessment must be completed and documented at the following intervals:</p> <ul style="list-style-type: none"> • At the time of the initial contact, during a home visit, and prior to allowing the child to remain in the household; • Prior to the case decision; • Prior to the removal of a child from the home; • Prior to the return home of a child in cases where the caretaker temporarily arranges for the child to stay outside of the home as a part of the safety intervention; • At any point a new CPS report is received; and • At any other point that safety issues are revealed during the Assessment phase. <p>A safety agreement must be used when there is a specific safety factor or risk of harm identified. The plan must:</p>	<p><u>SAFETY ASSESSMENT</u></p> <p>Just having an allegation does not warrant a safety intervention. If there is no information that indicates the allegation is valid, it does not become a part of the safety intervention. Families are not to be coerced into signing documents simply because of allegations.</p> <p>Family-centered practice encourages the engagement of the parent/caretaker in the development of the Safety Assessment. When there is a safe finding on the Safety Assessment, no parent/caretaker signature is required; however, requesting that the parent/caretaker sign and initial each page of the Safety Assessment documents that they willingly participated.</p>

Safety Planning

Protocol – What you must do	Guidance – How you should do it
<ul style="list-style-type: none"> • Be developed with the family (all parent(s)/caretakers(s) and Temporary Safety Providers) for the use of the Temporary Parental Safety Agreement (TPSA) to assure safety; • If a TPSA cannot ensure safety, file a juvenile petition for court intervention. <p>The TPSA (Part E of the Safety Assessment) must specify what actions the parent(s)/caretaker(s), agency, and any identified Temporary Safety Provider will take to ensure the safety of the children.</p> <p>See Use of TPSA with Parents & Caretakers Decision Tool.</p> <p>See safety for more information regarding but not limited to:</p> <ul style="list-style-type: none"> • Voluntary requirement of TPSA; • When a TPSA may not be adequate and/or when court intervention must be considered; and • Use of CFTs. <p>A copy of the North Carolina Safety Assessment must be provided to the parent(s)/caretaker(s) upon completion. Temporary Safety Providers must sign and receive a copy of the Safety Assessment.</p> <p>A new or modified Safety Assessment is required:</p> <ul style="list-style-type: none"> • When a new CPS report is received on an open CPS Assessment; • Prior to the case decision; 	

Safety Planning

Protocol – What you must do	Guidance – How you should do it
<ul style="list-style-type: none"> • Prior to the return home in cases where the caretaker temporarily arranges for the child to stay outside of the home as a part of the safety intervention; and • At any other point that safety issues are revealed. <p>Whenever a new or modified Safety Assessment and/or Temporary Parental Safety Agreement is required:</p> <ul style="list-style-type: none"> • The modified TPSA must be signed by the parent(s)/caretaker(s)/agency county child welfare worker and supervisor; and • A copy must be provided to the parent(s)/caretaker(s). <p>SAFETY PLANNING IN ASSESSMENTS WITH ALLEGATIONS OF DOMESTIC VIOLENCE After the initial interview with the non-offending parent/adult victim, if domestic violence is identified as a safety and risk factor, a Safety Assessment must be completed. The development of a Temporary Parental Safety Agreement must also be created, and a decision made about sharing the agreement with the alleged perpetrator of domestic violence.</p> <p>Subsequently, a separate Safety Assessment must be completed with the alleged perpetrator during their interview. Planning a safety agreement for the children’s safety with the alleged perpetrator must include the specific actions that they will take to stop the violence and ensure that the children are safe.</p> <p>Case-specific circumstances may necessitate the completion of an additional Safety Assessment and development of a safety agreement after the interview with the child(ren) alleged to be victims of abuse, neglect, and/or dependency.</p>	<p>When it is required, the decision to create a new or modified Safety Assessment is at the discretion of the county child welfare services agency.</p> <p>The Safety Assessment is indicated for use during the CPS Assessment, not during In-Home Services unless there is an assessment of new allegations.</p> <p>ASSESSMENTS WITH ALLEGATIONS OF DOMESTIC VIOLENCE Prior to a county child welfare services agency filing a petition, the following should be considered:</p> <ul style="list-style-type: none"> • A CPS Assessment involving domestic violence does not warrant an automatic custody removal to ensure safety. • Placement of children, even in the best placements, causes emotional damage by adding to the children’s experiences of grief, loss, anxiety, and/or fear caused by the separation from their families and their home. Children living in a chaotic or violent environment, may have developed skills to cope with that environment. Therefore, removal should not be considered until reasonable efforts are made to meet children’s needs for safety and nurturing in their own homes unless no efforts are possible because children are at imminent risk of harm.

Safety Planning

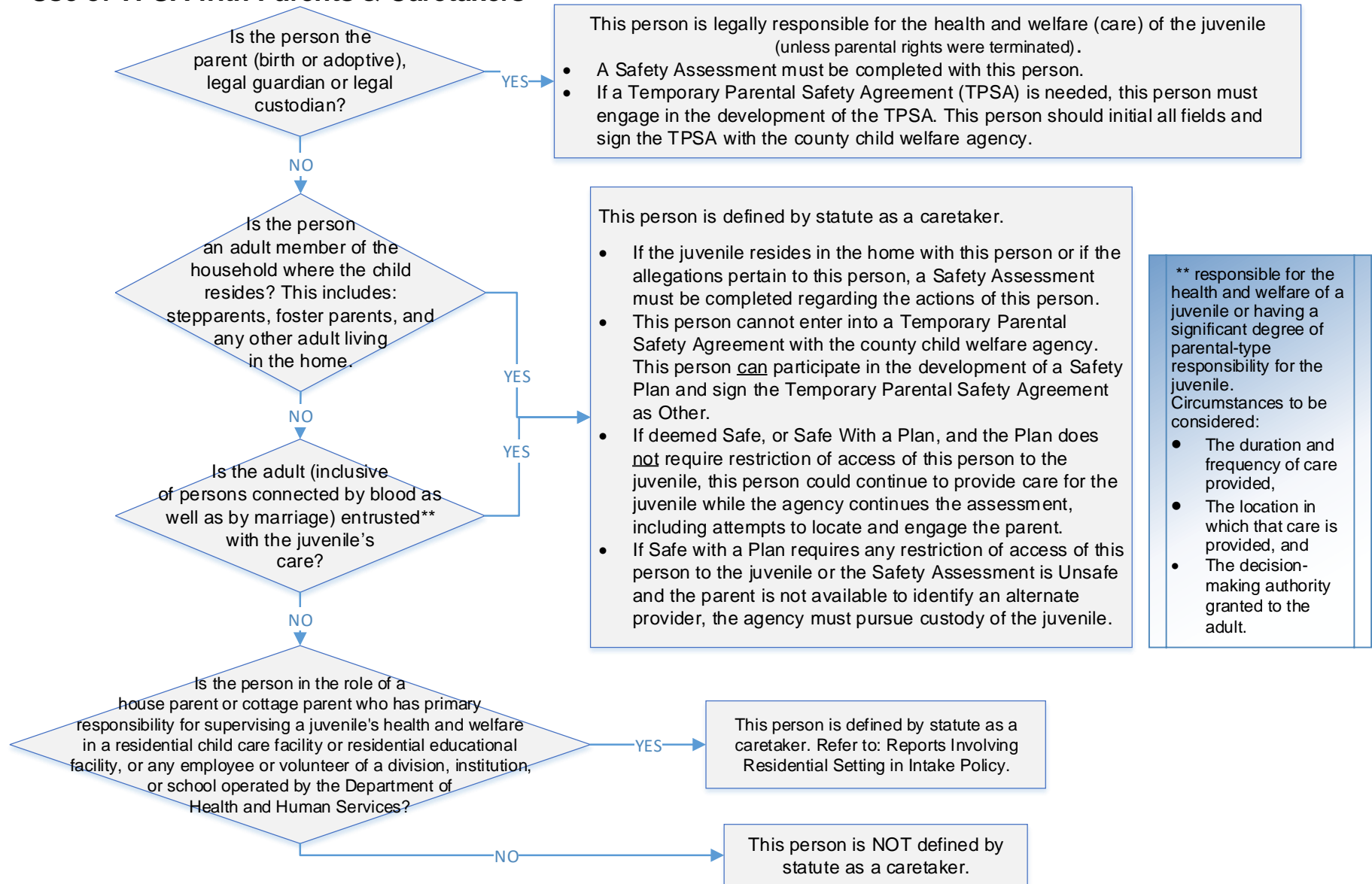
Protocol – What you must do	Guidance – How you should do it
<p><u>USE OF TEMPORARY SAFETY PROVIDERS</u></p> <p>If, at any time during the CPS Assessment process, it is decided that a child must stay outside of the home to ensure safety, or that a Temporary Safety Provider will move into the family home to supervise parental contact, the county child welfare services agency must assess the Temporary Safety Provider. For more information on initiating the use of a safety provider, temporary safety provider or kinship provider see “Temporary Safety Providers” in Cross Function Topics in the NC Child Welfare manual. (Assessment of the provider’s home is not required when the Temporary Safety Provider moves into the family home.)</p> <p>Whenever the Safety Assessment determines an intervention requiring separation or restriction of a parent’s access to their child is necessary, a Child and Family Team (CFT) meeting must be held. If it is not possible to hold the CFT meeting prior, then the Child and Family Team meeting must be held as soon as possible.</p> <p>DOCUMENTATION</p> <p>Written permission from the parent must be obtained, if:</p> <ul style="list-style-type: none"> • The parent is unable to travel with the county child welfare worker and child, • The Temporary Safety Provider is unable to transport the child; and • The county child welfare services agency chooses to transport the child alone. <p>The county child welfare worker conducting the CPS Assessment must remain with the child until the Initial Provider Assessment is completed and approved.</p>	<p><u>TEMPORARY SAFETY PROVIDERS</u></p> <p>The Temporary Safety Provider should be someone that both parents and the county child welfare worker agree will safely care for the child and the criteria rated on the Initial Provider Assessment discussed.</p> <p>Use of separation or restriction should be a last resort and should not be done without first exploring if an intervention can be identified that will keep the child safe without use of separation or restriction of a parent’s access.</p> <p>The county child welfare worker should speak with the Temporary Safety Provider after the parent has gained this person's agreement to care for the child. The Temporary Safety Provider must be informed that a county child welfare worker will need to make a home visit to conduct the Initial Provider Assessment.</p> <p>If the Initial Provider Assessment is positive, the county child welfare worker conducting the CPS Assessment should ask the Temporary Safety Provider to come for the child. If the county child welfare worker transports the child to the home of the Temporary Safety Provider, the parent should accompany the county child welfare worker to the home of the Temporary Safety Provider whenever possible.</p>

Safety Planning

Protocol – What you must do	Guidance – How you should do it
<p>If the county child welfare services agency determines that the Temporary Safety Provider is not suitable, another Temporary Safety Provider must be identified by the parent. If the parent cannot identify another Temporary Safety Provider, temporary custody of the child must be taken and a juvenile petition requesting non-secure custody must be filed by the county child welfare services agency conducting the CPS Assessment.</p>	

Safety Planning

Use of TPSA with Parents & Caretakers



CPS FAMILY AND INVESTIGATIVE ASSESSMENTS
Contacts During the Assessment

Protocol – What you must do	Guidance – How you should do it
<p>Interviews during the CPS Assessment must be conducted in the sequence least likely to cause further risk to the alleged victim, or there must be documentation that reflects the rationale for the sequence in which the interviews were conducted.</p> <p><u>INITIAL CONTACTS WITH HOUSEHOLD MEMBERS</u></p> <p>Face-to-face interviews with the parents or primary caretakers with whom the child resides must:</p> <ul style="list-style-type: none"> ● Be conducted the same day the child is seen; or ● There must be documentation to reflect diligent efforts made or rationale for delaying the interview that does not compromise the safety of the child. <p>Face-to-face interviews with non-primary caretakers (family or friends) known to be living in the child's household must:</p> <ul style="list-style-type: none"> ● Be conducted within seven calendar days of initiating the CPS Assessment; or ● There must be documentation to reflect efforts made. <p>During the initial face-to-face contact with the parent(s)/caretaker(s), the county child welfare worker must:</p> <ul style="list-style-type: none"> ● Discuss the allegations ● Communicate that the CPS Assessment must be completed within 45 calendar days of the date of the report; ● Provide a written explanation (e.g., a brochure) of the CPS Assessment response (<u>Family Response</u> or <u>Investigative Response</u>). The county child welfare worker must also verbally explain MRS and potential case decisions; ● Assess the safety of all child(ren); ● Assess ongoing risk; 	<p>Family-centered practice and the concept of involving parents and their formal and informal supports in decision-making throughout service provision can be challenging at times. It is important to remember that every interaction with the family and their supports is an opportunity to make a connection. Take the time to engage the family and the individuals that comprise the family’s support network. Recognize their strengths, help with transitions, provide choices, pay attention to the words used when interacting with families, and try to act as a change agent rather than an authority figure. Family members and their supports should be made to feel their involvement and participation throughout the life of the case is crucial and that their feedback is valued.</p> <p>Interviewing non-primary caretakers living in the home is important because these individuals may have knowledge of the allegations through observation or they may have a significant relationship with the child. Except in very unusual circumstances, everyone living in the household should be interviewed or there should be documentation to reflect efforts made. One example where this might not be appropriate would be in a transient shelter.</p> <p>ASSESSMENT INTERVIEWS WITH NON-OFFENDING PARENT/CARETAKER The Non-Offending Parent/Adult Victim Domestic Violence Assessment Tool (<u>DSS-5235</u>) contains scaled assessment questions and should be used to support the determination of safety and risk factors.</p> <p>The inability to speak with the non-offending parent/adult victim alone may be an indication of the level of control the perpetrator of domestic violence exerts over the family and an indication of high risk.</p>

CPS FAMILY AND INVESTIGATIVE ASSESSMENTS
Contacts During the Assessment

Protocol – What you must do	Guidance – How you should do it
<p>Information obtained from the non-offending parent/adult victim or children that may jeopardize the safety of the child or the non-offending parent/adult victim must not be shared, with the alleged perpetrator of domestic violence. Information shared, including information that may seem inconsequential, such as information about the non-offending/adult victim’s whereabouts and/or schedule if he or she has left the home/relationship, can place the child and non-offending parent/adult victim in grave danger.</p> <p>POSTPONEMENT OF THE ALLEGED PERPETRATOR INTERVIEW</p> <p>When the interview with the non-offending parent/adult victim and the completion of the Safety Assessment indicate safety and the risk of harm is high, the county child welfare worker and supervisor may delay interviewing the alleged perpetrator, documentation must reflect:</p> <ul style="list-style-type: none"> ● What steps were taken to identify the risk of harm to the child; and ● The reasons for the postponement. <p>Once safety is assured, the required face-to-face interview must be conducted.</p>	<p>ASSESSMENT INTERVIEW OF ALLEGED PERPETRATOR</p> <p>The Domestic Violence Perpetrator Assessment Tool (DSS-5234) contains scaled assessment questions and should be used to support the determination of the safety and risk factors.</p> <p>This will:</p> <ul style="list-style-type: none"> ● Help to protect the county child welfare worker; and ● Lessen the risk for children and the non-offending parent/adult victim. <p>The interview with the alleged perpetrator affords the opportunity to observe and document behaviors relative to the allegations, both positive and “concerning.” This observation supplements information obtained from:</p> <ul style="list-style-type: none"> ● Police reports; ● Criminal records; ● Hospital/medical records; ● The child(ren); and ● The non-offending parent/adult victim. <p>It is important to note that the alleged perpetrator may attempt to:</p> <ul style="list-style-type: none"> ● Present as the “victim”; ● To charm the county child welfare worker; ● Gain control of the interview; and/or ● Deny any domestic violence, insisting that the relationship is “perfect.” <p>During interviews with the perpetrator, the county child welfare worker should:</p>

CPS FAMILY AND INVESTIGATIVE ASSESSMENTS
Contacts During the Assessment

Protocol – What you must do	Guidance – How you should do it
	<ul style="list-style-type: none"> ● Focus on information from third party reports such as law enforcement, medical providers, or the Administrative Office of the Courts; ● Follow up on legal accountability and/or treatment and other service referrals for the alleged perpetrator; ● Convey to the alleged perpetrator that based on what happened (citing as much information as possible without compromising confidentiality or safety of the children, non-offending parent/adult victim, and/or the reporter) they will be required to take steps to stop the violence and ensure that the children are safe; ● Avoid debates and arguments with the alleged perpetrator. It is crucial that the focus of CPS is not to convince the alleged perpetrator to admit violent behavior, but to discuss how to ensure the child’s safety with them; and ● Set limits within the interview and future interactions and document the behaviors that make limit setting necessary and their capacity to respect efforts at setting limits.

Contacts During the Assessment

Protocol – What you must do	Guidance – How you should do it
<p>To assess the family’s living environment and how it impacts child safety, the county child welfare worker needs to tour the home and premises where the child sleeps, eats, and plays. The home assessment must specifically address:</p> <ul style="list-style-type: none"> ● Fire safety and the case record must contain documentation that fire safety has been discussed with the family at least once during the assessment; ● Firearm safety and the case record must contain documentation that firearm safety has been discussed with the family at least once during the assessment (see GS 14-315.1.); and ● Safe sleep for infants. If an infant resides in the home, the county child welfare worker must specifically discuss safe sleeping and observe the sleeping arrangements. This must be documented on the structured documentation tool, DSS-5010, and covered in the Temporary Parental Safety Agreement when appropriate. <p>If after requesting to tour the home the county child welfare worker is denied access:</p> <ul style="list-style-type: none"> ● The case must be staffed to determine if this tour is necessary to assess safety for the child(ren). If the decision is that a tour is necessary, the county child welfare services agency must consult with their county attorney about filing a petition for obstruction. ● Documentation must reflect the concerns and rational for decisions made. 	<p>The home visit also supports the identification of resources within the neighborhood or community and the family’s access to these resources.</p> <p>The American Academy of Pediatrics and the Centers for Disease Control and Prevention provide guidance that an infant is defined as 0-12 months of age. For a handout on Healthy Child Development please visit: https://www.cdc.gov/ncbddd/childdevelopment/positiveparenting/pdfs/infants-0-1-w-npa.pdf</p> <p>For information regarding sleep-related infant deaths and recommendations to reduce the risk of occurrence, please refer to the American Academy of Pediatrics policy statement at: Updated 2016 Recommendations for a Safe Infant Sleeping Environment.</p>

CPS FAMILY AND INVESTIGATIVE ASSESSMENTS
Contacts During the Assessment

Protocol – What you must do	Guidance – How you should do it
<p><u>NON-RESIDENT PARENT</u></p> <p>The county child welfare services agency must contact any non-resident parent who does not live in the home where the child neglect, abuse, and/or dependency allegations are being assessed to get their input on the allegations and the overall safety and risk level in the home.</p> <p>If the non-resident parent cannot be located, the record must include documentation showing the diligent efforts made to locate.</p> <p>If contact with the non-resident parent involves a safety threat and/or risk of harm to the child or to the resident parent/caretaker, the county child welfare services agency must:</p> <ul style="list-style-type: none"> ● Specify and verify the safety threat and/or risk of harm; ● State the reason(s) why contact is not in the best interest of the child and/or resident parent’s/caretaker’s safety; ● Document the concerns and that the decision was reviewed and approved by a supervisor/manager; ● Non-Resident Child and Non-Resident Child’s Parent/Caretaker <p>There may be circumstances in which a parent has a child who does not live in the home where the child abuse, neglect, and/or dependency is alleged.</p> <p>If the child was present during alleged incidents of child abuse, neglect, and/or dependency, the child must be considered a victim child and the child and his/her parent/caretaker must be interviewed within the statutory time requirements.</p> <p>If it is known that the child visits the home but was not present during the alleged incidents of abuse, neglect, and/or dependency, the child and their parent/caretaker must be interviewed within 7 calendar days of initiation, or prior to a visit, and their safety assessed in the home where the allegations occurred as a part of the CPS Assessment.</p>	<p>Discuss with the non-resident parent the level of their involvement with the child and discuss if relatives may be a resource for the child. If the non-resident parent or the family is not involved in the child’s life, it may be beneficial to ask what it would take for them to become involved.</p> <p>The resident parent may report that the non-resident parent has not been involved with the child to limit the non-resident parent’s interactions in the CPS Assessment. This may provide a good opportunity to discuss the parents’ relationship with each other, as well as information about the non-resident parent’s last contact with the child and what the quality of the contacts has been. The child may also be able to report on their own relationship with the non-resident parent, and the contacts.</p> <p>A non-resident child and non-resident child’s parent/caretaker may have important information related to the safety of the resident children. A decision for the non-resident child to have limited or no visitation with a parent may be due to safety risks or threats in the home. It is the responsibility of the non-resident child’s parent/caretaker to protect the child and ensure his/her safety.</p>

CPS FAMILY AND INVESTIGATIVE ASSESSMENTS
Contacts During the Assessment

Protocol – What you must do	Guidance – How you should do it
<p>If the county child welfare services agency determines that a petition is needed for the protection of the children living in the home where the child abuse, neglect, or dependency occurred, the legal stability of the non-resident child’s living arrangement must be assessed.</p> <p><u>IDENTIFYING/BUILDING THE FAMILY’S SAFETY NETWORK (Precursor to Relative Notification)</u></p> <p>NCGS § 7B-505 (b) states, “The department of social services shall use due diligence to identify and notify adult relatives and other persons with legal custody of a sibling of the juvenile within 30 days after the initial order removing custody. The department shall file with the court information regarding attempts made to identify and notify adult relatives of the juvenile and persons with legal custody of a sibling of the juvenile.”</p> <p>Child welfare workers must begin diligent efforts to locate adult relatives and any person who has legal custody of the victim children’s siblings as early in the assessment as possible. This includes adoptive parents of siblings. They are not considered relatives of the legal child; however, they must be considered in the identification and notification of individuals who have legal custody of a sibling.</p> <p>A Safety Network is a group of individuals who can provide ongoing support and services to the family to keep children safe. Safety circles are a visual tool to help identify people for the family’s safety and support network and to help professionals and family members talk about the networks’ role and who can be a part of it. They must be used during the assessment phase to build the family’s Safety Network. The inclusion of the Safety Circle tool serves a dual purpose:</p> <ol style="list-style-type: none"> 1. To identify individuals who can support and assist caretakers in providing a safe environment for their child(ren) 2. To ensure that children are placed with relatives when it is safe and appropriate. <p>The worker must ask about relatives with which the family has contact. Finding relatives helps the worker to identify the family’s Safety Network. This includes the three questions to build the Safety Circle:</p>	<p>Assessment workers should gather as much information as possible about a family’s supports. It may be easiest to collect this information while talking about demographic information with the family. Asking questions about relatives and those with which the family has regular contact is critical to ensuring the safety of children. When a family’s natural supports have been engaged, they can be an invaluable resource for the family in providing safety to children long after the child welfare agency is no longer involved. When there are immediate safety concerns, including the use of a Temporary Safety Provider, having the conversation about relatives should happen sooner rather than later.</p> <p>Caretakers can be asked questions to elicit who has information about the family and the current situation. Additionally, questions should be asked to assist caretakers with identifying other supports who should be informed and can join the family’s Safety Network and ensure the child(ren)’s safety. Questions include who helps them supervise their child(ren) and who would be called to help in the event of an emergency.</p> <p>Additional questions can be found in the Using Safety Circles to Create Safety Networks with Families</p>

Contacts During the Assessment

Protocol – What you must do	Guidance – How you should do it
<p>1. Who knows everything about what we are worried about here?</p> <p>2. Who knows some things about these worries?</p> <p>3. Who knows nothing about these worries, but should?</p> <p>The worker must document as much information as provided by the family including which ones will be contacted as collaterals.</p> <p>Please refer to the Using Safety Circles to Create Safety Networks with Families resource in the Child Welfare Resources section of the manual for additional direction on creating Safety Circles.</p> <p>COLLATERAL CONTACTS</p> <p>At least <u>two</u> collateral contacts (people significant to the case) must occur during the CPS Assessment. As a part of a thorough CPS Assessment, the county child welfare services agency must:</p> <ul style="list-style-type: none"> ● Contact all the collateral information sources identified by the family prior to making a case decision; ● Contact any collaterals identified on the CPS Structured Intake Form. These contacts must be made prior to making the case decision. An interview with all persons named at the time of the report as having information relevant to the CPS Assessment must occur; and ● Contact other persons or agencies known to be currently involved with the family or known to have knowledge of the situation. <p>If any of the above required contacts did not occur, there must be documentation regarding why the contacts did not occur.</p> <p>CONTACTS IN ASSESSMENTS WITH ALLEGATIONS OF DOMESTIC VIOLENCE</p> <p>Contact with collateral:</p> <ul style="list-style-type: none"> ● Information obtained from the non-offending parent/adult victim or children that may jeopardize the safety must not be shared; 	<p>resource located in the Child welfare Resource section. The children should also be asked questions about who visits the home and whose home they visit. In interviews with the children, the worker should also be listening for any friends, relatives, etc. that the child(ren) identify.</p> <p>Collateral contacts should be completed early during the assessment as the information gained should be used to help inform the case decision. Collateral contacts should be people that have significant knowledge of and contact with the family and child(ren), so they are able to answer questions related to the parent’s ability to provide a safe home for the children.</p> <p>CONTACTS IN ASSESSMENTS WITH ALLEGATIONS OF DOMESTIC VIOLENCE</p> <p>Collateral contacts being unaware of the occurrence of violence does not mean that it is not happening</p>

CPS FAMILY AND INVESTIGATIVE ASSESSMENTS
Contacts During the Assessment

Protocol – What you must do	Guidance – How you should do it
<ul style="list-style-type: none"> • Interviews with collaterals (neighbors, teachers, and extended family members) are required and must be conducted with the understanding that their personal safety is a consideration that may affect their willingness to discuss the abuse/violence occurring within the family; • Written demands for information as provided for in N.C.G.S. §7B-302(e) must be utilized if needed by the county child welfare services agency to acquire confidential information from domestic violence programs and other collateral information sources. 	<p>(domestic violence usually occurs in private and collaterals will not always be aware of the violence), and the case decision will not be based solely on information obtained from collateral contacts.</p>
<p><u>FOLLOW-UP VISITS & CONTACTS WITH THE FAMILY</u></p> <p>When the child(ren) are not interviewed during initiation, the county child welfare worker must continue to make efforts to interview the child(ren). This interview must be conducted as soon as possible and before the case decision is made.</p> <p>If face-to-face interviews with the parent(s) or primary caretaker(s) with whom the child resides are not conducted the same day the child is seen, the county child welfare worker must continue to make efforts to interview the parent(s) or primary caretaker(s). These interviews must be conducted as soon as possible and before the case decision is made.</p> <p>If face-to-face interviews with non-primary caretakers known to be living in the child's home are not conducted within 7 calendar days of initiating the CPS Assessment, the county child welfare worker must continue to make efforts to interview these non-primary caretakers. These interviews must be conducted as soon as possible and before the case decision is made.</p> <p>ONGOING CONTACTS</p> <p>The frequency of ongoing face-to-face contact with the child(ren) and parent(s)/caretaker(s) must be based on the safety and risk to the child(ren). Face-to-face contact with the victim child(ren) and parent(s)/caretaker(s) must occur at a minimum of twice a month and at least 7 calendar days apart with additional visits as needed to ensure the child’s safety. The</p>	<p>Ongoing contact with the family and significant others is critical in monitoring the child's safety and in knowing which services are most relevant.</p>

CPS FAMILY AND INVESTIGATIVE ASSESSMENTS
Contacts During the Assessment

Protocol – What you must do	Guidance – How you should do it
<p>interview with the child(ren) must address safety and be separate from the parent/caretaker for part of the contact.</p> <p>Documentation must support the frequency of face-to-face contact.</p> <p>The county child welfare services agency must meet with the parents and the child(ren) throughout the CPS Assessment to:</p> <ul style="list-style-type: none"> • Ensure the safety of the child; • Assess ongoing risk; • Monitor the effectiveness of the safety intervention; • Assess progress toward addressing the safety threat or risk; • Monitor child well-being and family well-being; and • Ascertain family strengths. <p>Every contact with a family member must:</p> <ul style="list-style-type: none"> • Include visual observations of each person, their behavior, and the environment, especially related to safety or risk; and • Describe specific interactions with and between each family member. <p>The county child welfare worker must communicate promptly to the parent(s)/caretaker(s) verbally or in writing:</p> <ul style="list-style-type: none"> • Whenever a decision is made to extend the time to complete a CPS Assessment beyond 45 calendar days; and • The reason for the extension. <p><u>American Indian Child / ICWA</u></p> <p>The county child welfare services agency must inquire if the child(ren) is a member of an American Indian tribe or is eligible for membership. All assessments Substantiated or found</p>	<p>If information has not already been obtained and documented in the case file, the agency should continue to inquire, at least once a month, about:</p> <ul style="list-style-type: none"> • Any absent parent; and • Extended family members or other extended social networks. <p><u>From the OSRI:</u></p> <p>If the child is older than an infant (0-12 months), the county child welfare worker must see the child alone for at least part of each contact.</p>

Contacts During the Assessment

Protocol – What you must do	Guidance – How you should do it
<p>to be Child Protective Services Needed and transferred for In-Home Services must document there was an inquiry about a parent/caretaker’s American Indian ancestry. If any American Indian ancestry is indicated, the ICWA checklist (DSS-5291) must be completed.</p> <p>Mexican Heritage The county child welfare services agency must inquire if the child(ren) has Mexican heritage. All assessments Substantiated or found to be Child Protective Services Needed and transferred for In-Home Services must document there was an inquiry about a child’s Mexican heritage.</p> <p>The county child welfare services agency must notify the Mexican Consulate in writing of the following information:</p> <ul style="list-style-type: none"> • When the County identifies a Mexican minor in its custody, or • When a parent or custodian of a Mexican minor has requested that the Consulate be notified. <p>This written notification is to be made within 10 working days of the decision to take protective custody of the Mexican minor. If the county child welfare services agency learns later that the juvenile has Mexican parentage, notification must be sent without delay to the appropriate parties.</p> <p>The county child welfare services agency must notify the Consulate and provide additional information:</p> <ul style="list-style-type: none"> • When a parent or custodian of a Mexican American minor has requested that the Consulate be notified, or • When the Division or a County learns that a non-custodial parent(s) resides in Mexico. 	

Contacts During the Assessment

Protocol – What you must do	Guidance – How you should do it
For more information on notification to the Mexican Consulate, please see the <i>Special Legal Considerations (MEPA, ICWA, Mexican Heritage)</i> section of the Cross Function Manual .	

Protocol – What you must do	Guidance – How you should do it
<p><u>CASE STAFFING/SUPERVISION</u></p> <p>The social work supervisor and assigned child welfare case worker must staff each assessment case:</p> <ul style="list-style-type: none"> ● Frequently enough to ensure the safety of all victim children, but at a minimum of once every other week; and ● Whenever there is a change in circumstances that impacts safety and/or risk to a child(ren). <p>Staffing must cover but not be limited to:</p> <ul style="list-style-type: none"> ● Risk of maltreatment; ● Safety and Temporary Parental Safety Agreement, if in place; ● Family home environment; ● Family’s strengths and needs; ● Child well-being, parent well-being, and family well-being; ● Progress toward addressing any safety threat or risk; and ● Review of the ongoing family and collateral contacts; and ● Safety Networks <p>Two-level decisions/reviews must occur on every CPS Assessment at the following times:</p> <ul style="list-style-type: none"> ● When the Risk Assessment and Strengths and Needs Assessment are completed; ● Prior to initiating or terminating the use of a Temporary Safety Provider; ● At completion of the Safety Assessment and prior to implementation of a Temporary Parental Safety Agreement; ● Before modification of a Temporary Parental Safety Agreement; ● Regarding diligent efforts to locate a child/family and when these efforts can end; ● At case decision; ● Prior to filing a petition; and 	<p><u>CASE STAFFING/SUPERVISION</u></p> <p>Case staffing can occur in various forms. The focus of case staffing is to ensure that the case child welfare worker follows North Carolina child welfare policy, addresses family needs, and monitors risk, safety, and family progress. Supervision provides coaching and support to the county child welfare worker. This may be accomplished through an office meeting but could also occur when a supervisor attends a home visit or other family meeting with a child welfare worker.</p> <p>To ensure that every case includes all required documentation and two-level decision making, each county child welfare services agency should develop a method to indicate supervisory review of the case file for compliance with policy and protocol.</p>

Two-Level Decision Making/Role of the Supervisor

Protocol – What you must do	Guidance – How you should do it
<ul style="list-style-type: none"> Whenever there is a change in circumstance that impacts the safety and/or risk to a child(ren). <p>Two-level decisions/reviews must occur within the context of a staffing between the county child welfare worker and a county child welfare supervisor at a minimum.</p> <p>To dispose of the maltreatment allegations, enter contributory factors, review assessment results (Safety Assessment, Temporary Parental Safety Agreement, Risk Assessment, Strengths & Needs), review RIL information and to document the disposition/case decision date and a summary of case closure activities a Second Level Decision in NC FAST must be submitted. Signatures of the county child welfare worker and supervisor are required if the CPS Assessment Documentation Tool is not completed in NC FAST.</p> <p>The case supervisor must review every CPS Assessment case file for compliance with policy and protocol.</p>	

Interference with a CPS Assessment

Protocol – What you must do	Guidance – How you should do it
<p>The Child Medical Evaluation Program Medical has four main components:</p> <ol style="list-style-type: none"> 1. Administrative office staffed by social workers and medical providers who are a resource for accessing available consultations during CPS Assessments. 2. Oversight of Child Medical Evaluation consultations completed by rostered providers. 3. Oversight of Regional Abuse Medical Specialists (RAMS) who are a resource for accessing available consultations. 4. Oversight of Clinical Assessment of Protective Parenting (CAPP) completed by rostered providers. <p>The Child Medical Evaluation Program (CMEP) can be utilized, when appropriate, as a component of a thorough CPS Assessment for alleged victims of neglect, abuse or dependency for children age birth to 18 years old. County child welfare agencies can consult with the CMEP and request a CME for any case open in CPS Assessments (regardless of track), that in their determination would assist them with the case decision.</p> <p>Requesting a CME or CAPP does not negate the county child welfare agency’s responsibility to follow interviewing protocols required by CPS Assessment policy. See Initiation and Follow-Up Visits & Contacts with the Family.</p> <p>A trauma-informed, developmentally appropriate medical interview is a standard component of CMEs and CFEs for children older than three years of age.</p>	<p>Refer to “Enhanced Practice for Working with Special Populations” in Cross Function Topics in the NC Child Welfare manual for additional guidance about accessing a Child Medical Evaluation (CME) or Clinical Assessment of Protective Parenting (CAPP) for children and families who are at a greater risk of maltreatment.</p> <p>CMEP is funded by NC DSS to maintain a roster of medical providers that are qualified to perform medical evaluations of child maltreatment. The CMEP administrative office (919-843-9365) is available to provide consultation to county child welfare agencies on a case-by-case basis.</p> <p>A CME is provided free of cost to the family and county child welfare agency, provided there is appropriate documentation, and there is a signed Consent/Authorization for Child Medical Evaluation (DSS-5143) is completed. A CAPP is provided free of cost to the family and county child welfare agency, provided there is appropriate documentation, and there is a signed Consent/Authorization for Clinical Assessment for Protective Parenting (DSS-5401) is completed. A protocol for obtaining the consent is provided at the end of this section.</p> <p>The CMEP Administrative office has staff that can help to:</p> <ul style="list-style-type: none"> • Answer questions regarding medical issues or a need for CME. • Provide a 2nd opinion radiology review for the purposes of better informing a CMEP medical provider’s findings. • Review medical records due to conflicting medical opinions. • Provide an opinion on a potential medical child abuse case. <p>A Child Medical Evaluation (CME) is:</p> <ul style="list-style-type: none"> • An outpatient medical evaluation of suspected child maltreatment. • Performed at the request of CPS during an open CPS Assessment.

Interference with a CPS Assessment

	<ul style="list-style-type: none">• Provided by a qualified provider rostered with the North Carolina Child Medical Evaluation Program (CMEP) (https://www.med.unc.edu/cmep/). <p>CME is further defined and described by Medicaid and Health Choice Clinical Coverage Policy No: 1A-5: Child Medical Evaluation and Medical Team Conference for Child Maltreatment.</p> <p>Depending on how the county child welfare agency’s community coordinates its response to alleged child maltreatment, the medical interview may be conducted by a rostered CMEP provider or a professional interviewer that works in conjunction with that the medical provider. Regardless of who conducts the interview, details from it help the medical provider understand the level of concern for maltreatment and the treatment plan to ensure the child’s well-being needs are met. The purpose of the medical interview is to assist with reaching the appropriate medical diagnosis and treatment plan for the child – not to validate or dispute the allegations.</p> <p>To prepare for the CME the child welfare worker should:</p> <ul style="list-style-type: none">• Complete referral information required by CMEP rostered provider (this includes the DSS-5143, Consent/Authorization for Child Medical Evaluation).• Prepare the family by explaining the reason for the referral, purpose of the CME and describing what the child and family can expect from the appointment.• Attend and /or participate virtually in the appointment for the CME and provides the following (if applicable) to inform the medical evaluation:<ul style="list-style-type: none">○ a timeline of events (to include history of supervision) leading up to the alleged maltreatment○ external medical records○ digital images of injuries○ description of the scene and potential mechanisms of injury
--	--

Interference with a CPS Assessment

<p>CHILD MEDICAL EVALUATION PROGRAM</p> <p>Below is a list of circumstances where the local child welfare agency must refer children for a Child Medical Evaluation. Policy indicates when overrides are allowed.</p> <p><u>Children 1 - 3 years old</u></p> <p>The local child welfare agency must refer children with the following four circumstances for a CME.</p> <ol style="list-style-type: none"> Children under the age 1 or are pre-cruising with a Sentinel Injury <p>These children must receive a CME including but not limited to when:</p> <ul style="list-style-type: none"> The child has been hospitalized or already seen by a non-CMEP rostered medical provider for the injuries. The reporter is a medical provider. <p>Note: For these children, there is no override of this requirement.</p> <ol style="list-style-type: none"> Children that are: 3 years-old and under; that are non-verbal; or that appear developmentally delayed; who, upon assessment or as reported by a medical provider, have or have concerns for: <ul style="list-style-type: none"> Abusive head trauma (previously referred to as “Shaken Baby Syndrome”) Bruises: <ul style="list-style-type: none"> patterned bruises bruising in atypical areas such as ears, torso, backs of arms/legs, genitalia, buttocks and/or neck multiple bruises from a single injury petechial bruising (ruptured blood vessels, looks like tiny pinpoint of bleeding) any bruising in a child who is pre-cruising Injuries to the head, including bruises 	<p>Definition of Sentinel Injury: Visible, poorly explained small injuries such as a bruise on any part of the body or intraoral (mouth) injury in pre-cruising child often from abuse and can precede more serious abuse</p> <p>“Cruising” means the child can pull to a stand and take a few steps holding onto something. Children typically learn to do this between 8 and 11 months of age.</p> <p>A child with a small bruise from abuse may have severe internal injuries, so additional medical screening is necessary. Medical screening is performed to detect additional injuries and to rule out conditions that can cause easy bruising such as a bleeding disorder.</p> <p>Examples of Sentinel Injuries:</p> <ul style="list-style-type: none"> bruises, regardless of size or color of bruise, anywhere on the body injuries inside and outside of the mouth (e.g., bruising to tongue, cuts in mouth) broken blood vessels or red spots in the eyes (e.g., subconjunctival hemorrhages)
--	---

Interference with a CPS Assessment

<ul style="list-style-type: none"> ○ Intentional, poorly explained or unexplained burns ○ Fractures that are inflicted, poorly explained and/or unexplained ○ Maltreatment because their sibling of any age has suffered a “near fatality” as a result of alleged abuse or neglect ○ Been hospitalized for concerns of maltreatment ○ Malnutrition or Failure to Thrive ○ Factitious Disorder Imposed Upon Another (medical child abuse) ○ Chronic medical problems with repeated concerns for medical neglect ○ sexual abuse; this includes (but is not limited to): fondling, penetration of any kind, exposure to pornography, grooming behavior, and human trafficking. <p>Note: Written documentation from a rostered CMEP provider stating that a CME is not necessary can override this requirement for section 2. Documentation must indicate that the child has already obtained a complete medical evaluation for the concerns and/or no additional medical evaluation is needed.</p> <p>3. Children that are: 3 years-old and under; that are non-verbal; or that appear developmentally delayed; who live with a child that has, during the current CPS assessment:</p> <ul style="list-style-type: none"> ○ obtained a serious injury (including sentinel injuries) ○ died as a result of suspected abuse or neglect ○ been placed outside of the home due to physical or sexual abuse ○ tested positive for a sexually transmitted infection (STI) <p>Note: Written documentation from a rostered CMEP provider stating that a CME is not necessary can override this requirement for section 3.</p>	<p>Bite marks and atypical bruises can be signs of child maltreatment, especially if the injuries are unexplained, poorly explained or have an explanation that does not appear plausible.</p> <p>This includes injuries requiring medical attention that:</p> <ul style="list-style-type: none"> • Appear non-accidental • Are not witnessed • Care was delayed • Are unexplained, poorly explained or have an explanation that does not appear plausible; for example: <ul style="list-style-type: none"> ○ The history of the injury is inconsistent with the child’s developmental skills or inconsistent with the severity of the injury. ○ The injury is blamed on the actions of the child, a sibling/other child or a pet. ○ Parent/caregiver’s account of the injury continues to change, none of which is consistent with the injury. <p>Definition of Factitious Disorder Imposed Upon Another (formerly known as Munchausen Syndrome by Proxy) is the DSM-5 psychiatric disorder associated with caretakers who commit medical child abuse.</p> <p>The Child Abuse and Treatment Act (CAPTA) defines a “near fatality” as an “act that, as certified by a physician, places the child in serious or critical condition.”</p> <p>A CME may continue to be needed after the acute needs are evaluated and addressed by a medical provider.</p>
--	---

Interference with a CPS Assessment

<p>Documentation must indicate that the child has already obtained a complete medical evaluation for the concerns and/or no additional medical evaluation is needed.</p> <p>4. Any child that has suffered a “near fatality” as a result of alleged abuse or neglect.</p> <p>Note: For these children, there is no override of this requirement.</p> <p><u>Regional Abuse Medical Specialists (RAMS)</u></p> <p>Counties must contact RAMS for a consultation for any case screened in for assessment that meets any of the following criteria, regardless of whether the screening decision is abuse or neglect:</p> <ul style="list-style-type: none">• A child is 3 and under AND there are concerns for unexplained/poorly explained injuries• A child is 3 and under AND there is concern for a sexually transmitted infection• A child is 3 and under AND another child who lives in the home has died as a result of suspected abuse or neglect• Any case with a concern for medical child abuse (Munchausen by Proxy)• Any case accepted for medical neglect with a medically complex child who:<ul style="list-style-type: none">○ Requires subspecialty care by 2 or more specialists OR○ Receives a second report for medical neglect within 6 months regardless of the case outcome OR○ Requires devices to sustain their function such as a tracheostomy or g-tube <p><u>Children 4 years old and Older</u></p> <p>If a CME is not obtained for cases involving the following, child welfare documentation must support, why that decision was made.</p>	<p><u>Regional Abuse Medical Specialists (RAMS)</u></p> <p>For additional information, the RAMS policy can be found in the Child Welfare Manual at https://policies.ncdhhs.gov/divisional/social-services/child-welfare/policy-manuals/rams-manual_june-2023.pdf</p> <p>A disability which necessitates increased physical contact, limits the child's ability to defend them self, limits a child's social contact outside the living situation, or increases the child's dependency on the caregiver</p>
---	---

Interference with a CPS Assessment

<p>Children who are 4 years old and older who during the assessment or as reported by a medical provider, where the following allegations are noted:</p> <ul style="list-style-type: none"> • abusive head trauma (previously referred to as “Shaken Baby Syndrome”) • bruises: <ul style="list-style-type: none"> • patterned bruises • bruising in atypical areas such as ears, torso, backs of arms/legs, genitalia, buttocks and/or neck • multiple bruises from a single injury • petechial bruising (ruptured blood vessels, looks like tiny pinpoint points of bleeding) • Injuries to the head including bruises • intentional, poorly explained or unexplained burns • fractures that are inflicted, poorly explained and/or unexplained • been hospitalized for concerns of maltreatment • malnutrition or Failure to Thrive • Medical child abuse (formerly known as Munchausen Syndrome by Proxy) or when a caregiver falsifies or induces a child’s illness leading to unnecessary and potentially harmful investigations or treatment • chronic medical problems with repeated allegations for neglect - improper medical care. • sexual abuse; this includes (but is not limited to): fondling, penetration of any kind, exposure to pornography, grooming behavior, and human trafficking. <p>There are other instances in which a CME must be considered as part of the CPS Assessment. This list is not intended to be all-inclusive. A CME can also be used to:</p> <ul style="list-style-type: none"> • Determine the plausibility of the parent/caregiver’s explanation for an injury • Evaluating and interpreting developmental delays in children 	<p>for survival that increases the child’s risk for maltreatment. The child welfare agency should consider a CME for children with a physical or developmental disability. See “Enhanced Practice for Working with Special Populations” in Cross Function.</p> <p>If uncertain, the county child welfare worker should consult with the CMEP administrative office and/or a local provider rostered with CMEP to determine if a CME is needed. . The CMEP can be visited at: https://www.med.unc.edu/pediatrics/cmep/</p> <p>Training Resource: to learn more about medical conditions and child maltreatment visit https://www.ncswlearn.org/default.aspx</p>
---	---

Interference with a CPS Assessment

- Assisting with the interpretation of behavioral concerns and recommending appropriate referrals
- Evaluating untreated or inadequately treated medical conditions which have had a negative impact on the child’s overall health or physical development
- Diagnosing and interpreting sexually transmitted diseases in prepubertal and post-pubertal children

Clinical Assessment of Protective Parenting

The Clinical Assessment of Protective Parenting (CAPP) is an empirically supported program that assesses the current risk and potential of future harm that a caretaker may pose to a child and assists in identifying services that will enhance a parent’s capacity to provide for their child’s needs.

The interviewee for a CAPP is the parent or caretaker to a child(ren) who are subject to an open CPS Assessment and circumstances meet any of the criteria below:

- There have been two or more reports of maltreatment by the interviewee with similar allegations and no evidence of progress.
- The agency needs assistance with identifying parent/caretaker needs and/or the appropriate services to protect children from entry into foster care.
- “Primary Needs” identified on the DSS-5229 indicates that the parent would benefit from further clinical assessment.
- At least one of the children is part of a population identified as at greatest risk of maltreatment AND the Family Risk Level on the DSS-5230 is HIGH. Populations identified at the greatest risk of maltreatment are:
 - A child under age 3

Clinical Assessment of Protective Parenting

In alignment with a trauma-informed child welfare system and the Family First Prevention Services Act the Clinical Assessment of Protective Parenting (CAPP) will allow the local child welfare agency to obtain the needed information to support families, safety plan, and minimize the number of providers interviewing children suspected of being maltreated.

Additional resources for the CAPP can be found at:

<https://www.med.unc.edu/pediatrics/cmep/services/new-capp-information/>

Interference with a CPS Assessment

<ul style="list-style-type: none"> ○ A teenager with mental health and/or behavioral issues ○ A child born to young parents with little to no parenting education ○ A child born to parents with a significant history of abuse/neglect ○ A child living in significant poverty ○ LGBTQ youth <p>When a local child welfare agency determines that a case needs a CAPP, the child welfare worker should:</p> <ol style="list-style-type: none"> 1. Identify and contact a CAPP provider using the CMEP portal: https://cmepweb.dhhs.nc.gov/Account/LogOn?ReturnUrl=%2F 2. Contact a CAPP provider to ensure they can conduct the evaluation 3. Complete the CAPP Authorization Request and Consent/Authorization Form for a Clinical Assessment of Protective Parenting (DSS-5401). 4. CMEP will review the request provide authorization if the case meets appropriate criteria. 5. The child welfare worker and CAPP provider will coordinate scheduling. 	<p>The child welfare worker can expect to receive the completed CMEP CAPP Report from the CAPP provider within 2 weeks of the date of service.</p>
<p>Consent for a CME/CAPP</p> <p>The child welfare agency must obtain consent from the parent/legal guardian for a CME/CAPP. If the child is in the custody of the county child welfare agency, the county child welfare agency must obtain authorization for consent from the parent for a CME/CAPP, if not authorized by the court, per § 7B-505.1. This is documented by completion of the Consent/Authorization for Child Medical Evaluation (DSS-5143) or the Consent/Authorization for Clinical Assessment of Protective Parenting (DSS-5401).</p>	<p>Consent</p> <p>The child welfare worker should explain to the family what the consent for the CME (DSS 5143) or (DSS-5401) authorizes.</p> <p>Consent for the CME/CAPP is only needed from one parent; even if the other parent objects.</p>

Interference with a CPS Assessment

Protocol – What you must do	Guidance – How you should do it
<p>There will be instances when a county child welfare services agency must file an obstruction/interference petition to proceed with the CPS Assessment. The petition must:</p> <ul style="list-style-type: none"> ● Articulate and verify evidence that the obstruction occurred without lawful excuse and that obstruction interfered with the agency’s duty to investigate pursuant to 7B-303. <p>Although the scope of a hearing on an interference petition does not extend to whether a child is in fact abused/neglected/dependent, the allegations of the report must meet the criteria for A/N/D.</p> <p>Obstruction of or interference with the CPS Assessment includes:</p> <ul style="list-style-type: none"> ● Refusing to disclose the whereabouts of the juvenile; ● Refusing to allow the agency to have personal access to the juvenile; ● Refusing to allow the agency to observe or interview the juvenile in private; ● Refusing to allow the agency access to confidential information and records upon request; ● Refusing to allow the director/agency to arrange for an evaluation of the juvenile by a physician or other expert; or ● Other conduct that makes it impossible for the director/agency to carry out the duties necessary to make a thorough assessment of the safety and risk of the children. 	<p>When a person or entity interferes with the CPS assessment process, it is the worker’s obligation to adequately explain the need to thoroughly complete the assessment to ascertain the safety and well-being of the child. Often, having a rational, non-threatening but frank discussion with the family or organization impeding the CPS assessment can result in cooperation. This discussion can center on explaining the child welfare process, emphasizing service provision to the family and explaining that not every child that comes to the attention of a county agency is removed from their families. This discussion is not a bargaining session, as the law is very clear that an order related to obstructing with or interfering with a CPS Assessment is enforceable by either civil or criminal contempt. Rather, the discussion is meant to model the partnership process by listening to and acknowledging fears, understanding feelings, and explaining the need to proceed with the assessment within the provisions of the law.</p> <p>The provision of Child Protective Services, including visiting and interviewing the child in their home with the parent’s permission, does not infringe upon Fourth Amendment rights. Securing parental consent to interview the child is vital; efforts to secure voluntary consent must never be coercive. The county child welfare worker should explain their role and express a desire to interview the child to assess safety, risk, and the strengths and needs of the family. It is important to remember that the county child welfare worker agency’s ability to interview children at school or at childcare centers has not been compromised – schools and child care centers are not private residences.</p>

Interference with a CPS Assessment

<p>Filing the Petition: Obstruction of or Interference with Juvenile Investigation</p> <p>A county child welfare services agency can file a petition at any point during the CPS Assessment process if any person obstructs or interferes with the CPS Assessment. The county must name the person as a respondent and request from the court an order directing that person to cease such obstruction or interference using forms:</p> <ul style="list-style-type: none">● Obstruction of or Interference with Juvenile Investigation (form AOC-J-120); and● Juvenile Summons and Notice of Hearing for Obstruction of or Interference with Juvenile Investigation (form AOC-J-121). <p>The person obstructing the CPS Assessment is not limited only to a parent or family member.</p> <p>If the court finds that there was obstruction or interference, the court will issue an Ex Parte Order to Cease Obstruction of or Interference with Juvenile Investigation (form AOC-J-122).</p> <p>The reporter’s identity remains confidential. However, the judge may order disclosure of the reporter during the hearing.</p>	<p>See “File a Petition, Obstruction of or Interference with Juvenile Investigation” in Cross Function Topics the NC Child Welfare manual.</p> <p>The debate regarding parental rights versus the provision of Child Protective Services is an issue that has existed for some time. The Fourth Amendment to the U.S. Constitution reads as follows, “The right of the people to be secure in their persons, houses, papers, and effects, against unreasonable searches and seizures, shall not be violated, and no warrants shall issue, but upon probable cause, supported by oath or affirmation, and particularly describing the place to be searched, and the persons or things to be seized.”</p> <p>Despite best efforts to engage in family-centered practice, there will be instances where a county child welfare services agency must file an obstruction or interference petition to proceed with the CPS Assessment. If the family or person interfering with or obstructing the assessment is still unwilling to cooperate, they should be informed (again, in a rational and non-threatening manner) of the law and the potential outcomes of the filing of a petition in court.</p>
---	---

Notifications

Protocol – What you must do	Guidance – How you should do it
<p><u>USING THE ASSESSMENT TOOLS</u></p> <p>Prior to or at the time of the case decision, the CPS Assessment tool must be documented in NC FAST and the following must be completed:</p> <ul style="list-style-type: none"> ● The North Carolina Family Risk Assessment of Abuse / Neglect (DSS-5230); and ● The North Carolina Family Assessment of Strengths and Needs (DSS-5229) must be completed during the CPS Assessment. <p>The North Carolina Family Risk Assessment of Abuse / Neglect (DSS-5230) must be completed on the home of the alleged perpetrator. In cases where both parents are alleged perpetrators and they live in separate homes, a North Carolina Family Risk Assessment of Abuse / Neglect (DSS-5230) must be completed for each home.</p> <p>The North Carolina Family Risk Assessment of Abuse / Neglect (DSS-5230) and the North Carolina Family Assessment of Strengths and Needs (DSS-5229) must be completed based on all information obtained during the assessment (including information associated with a new report), including:</p> <ul style="list-style-type: none"> ● Face-to-face interviews with and/or observation of parents, caregivers, others living in the child(ren)'s home, and children; and ● Pertinent collateral contacts. <p>Prior to or at the time of the case decision, the CPS Assessment case decision must be documented on the Case Decision Section of the CPS Assessment Documentation Tool (DSS-5010) and must:</p> <ul style="list-style-type: none"> ● Be a shared decision, including at a minimum, the county child welfare worker and the county child welfare supervisor or supervisor's designee or staffing team; 	<p>County child welfare workers must still use their professional judgment and their social work skills when completing assessments and making decisions about the case. These tools do not take the place of complete documentation in the case record.</p> <p>Determining whether a child is abused, neglected, and/or dependent requires careful assessment of all the information obtained during the CPS Assessment process. In making a case decision, it is important to assess not only that maltreatment has occurred, but also the current safety issues, any future risk of harm, and the need for protection.</p> <p>USE OF NC FAMILY RISK ASSESSMENT</p> <p>Items N2. and A2. on the Risk Assessment have ratings for families identified with a history of CPS reports. Occasionally a family comes to the attention of a county child welfare services agency with a number reports within the past year or two. County child welfare agencies should consider additional questions to determine if there is pattern or other factors for assessment prior to a case decision.</p> <p>Refer to Investigative Assessments or Family Assessments for more guidance regarding case decisions.</p>

Notifications

Protocol – What you must do	Guidance – How you should do it
<ul style="list-style-type: none"> ● Be correct based on the legal definitions (explain the context of the abuse, neglect, and/or dependency and how it relates to the child maltreatment); ● Document specific caretaker behavior that resulted in harm to the child(ren) or clarify the absence of risk of harm; ● Identify the effects of neglect, abuse and/or dependency on the child(ren); ● Identify the steps taken by the agency and/or parent to protect the child(ren); ● Identify the family strengths and needs; ● Document the need for continued involuntary services to address the identified safety issues and future risk of harm to the child(ren); and ● Be made within 45 calendar days for a CPS Assessment, or there must be documentation to reflect the rationale to extend the CPS Assessment beyond the required timeframes. <p><u>MAKING THE CASE DECISION</u></p> <p>The CPS Assessment Documentation Tool must document answers to the following questions:</p> <ol style="list-style-type: none"> 1. Has the maltreatment occurred with frequency and/or is the maltreatment severe? 2. Are there current safety issues? Would the child be unsafe in the home where the abuse, neglect, or dependency occurred? (Note: If the child(ren) is separated from their parent or access is restricted and that separation/restriction continues to be necessary due to safety issues, then this question must be answered “yes.”) 3. Is the child at risk of future harm? 4. Is the child in need of protection? <p>To make a case decision to substantiate or find child protective services needed, the answer to one or more of the above questions must be “yes.” See Family</p>	<p>In cases where the perpetrator remains unknown, but the caregivers are the only people responsible for the care of the child, a case decision of Unsubstantiated or Protective Services Not Needed would not be appropriate. Indicator 1 on the Safety Assessment Tool (DSS-5231) can help guide decision making in cases where there is an unknown perpetrator and a child/ren may still be at risk of future harm and in need of protection. Further guidance can be found under the Decision Making in Cases with Unexplained/Poorly Explained Injuries with Unknown Perpetrators section.</p>

Notifications

Protocol – What you must do	Guidance – How you should do it
<p><u>Assessment</u> for additional protocol and guidance regarding case decisions. See <u>Investigative Assessment</u> for additional protocol and guidance regarding <u>RIL</u>.</p> <p>Only in unusual circumstances should a supervisor and staffing team change the indicated structured case decision. In those cases, the supervisor must complete the “Rationale for Case Decision/Disposition” to justify the change.</p> <p>When the assessment involves a member of a state or federally recognized American Indian tribe, the DSS-5335 and DSS-5336 must be completed. See Cross Function Topics, Special Legal Considerations and the Indian Child Welfare Act (ICWA), in the <u>NC Child Welfare manual</u>.</p> <p>DECISION MAKING IN DOMESTIC VIOLENCE ASSESSMENTS</p> <p>When completing the four questions that are a part of the case decision, the answers to the following questions must be included:</p> <ul style="list-style-type: none"> ● Have the children intervened in the domestic violence? (whether the child was injured or not, their direct involvement presents extreme risk) ● Is there an established pattern of domestic violence that is chronic or severe? ● Have the children exhibited extreme emotional or behavioral problems, or been diagnosed with mental health conditions such as PTSD, depression, anxiety, or fear because of living with domestic violence? ● Has there been a coexistence of domestic violence and substance abuse that impedes the non-offending parent/adult victim’s ability to assess the level of danger in the home? (substance abuse may exacerbate the violence, increasing risk to the children and non-offending parent/adult victim); ● Has the non-offending parent/adult victim been threatened or injured in the presence of the children? 	<p>DECISION MAKING IN DOMESTIC VIOLENCE ASSESSMENTS</p> <p>For CPS assessments with allegations of domestic violence, every effort should be made to hold the perpetrator of domestic violence accountable for the violence and to only hold the non-offending parent/adult victim accountable for the actions they did or did not take to protect the children.</p> <p>Documentation should reflect the non-offending parent/adult victim’s response to offers of help They should be held responsible for failing to protect the children.</p> <p>When domestic violence is the only factor in a family situation, it is not acceptable to substantiate abuse or neglect on the non-offending parent/adult victim solely for the actions of the perpetrator of domestic violence who caused the situation. If, however, the non-offending parent/adult victim has abused and/or neglected the child, such a case decision is appropriate.</p>

Notifications

Protocol – What you must do	Guidance – How you should do it
<ul style="list-style-type: none"> ● Has the non-offending parent/adult victim been hospitalized for injuries resulting from domestic violence? 	<p>Only when a non-offending parent/adult victim is given the necessary offers of help and the support system to protect themselves and children, then acts contrary to that help and support, can he or she be substantiated on for failing to protect the children.</p> <p>When making the decision of whether to hold the non-offending parent/adult victim responsible for the abuse, neglect, or dependency of their child(ren), the following factors should be considered:</p> <ul style="list-style-type: none"> ● The non-offending parent/adult victim’s history of: <ul style="list-style-type: none"> ○ Using domestic violence shelters or programs; ○ Calling law enforcement; ○ Utilizing court services for domestic violence protection orders; ○ Making or attempting to make other arrangements to protect the child, such as taking them to a relative’s or friend’s house; ○ Cooperation with past child welfare services and possible motives for lack of engagement, including but not limited to a lack of trust in the child welfare system’s ability to keep them or the child(ren) safe; and ○ Past efforts to protect the child(ren). ● The level of risk and safety factors for the child now.

Notifications

<p>DECISION MAKING IN CASES WITH UNEXPLAINED/POORLY EXPLAINED INJURIES AND AN UNKNOWN PERPETRATOR</p> <p>For cases involving infants and non-verbal children who are not yet mobile, the child welfare worker must answer the following questions along with the four case decision questions.</p> <ul style="list-style-type: none">• Have any circumstances of the family changed that provide safety for the child(ren) in the absence of child welfare services?• What are the conclusions and/or recommendations of any medical evaluations, such as a CME?• If law enforcement is involved, what is the status of their case? Will there be charges?• Has the child(ren) sustained any additional injuries of any kind during the assessment?• What steps have parents/caretakers taken during the assessment to address the concerns? <p>DECISION MAKING IN CASES WITH NO CHILD IN THE HOME</p> <p>When there is an open assessment regardless of the track and the child dies or has an 18th birthday and is no longer a minor AND there are no other children in the home a case decision must still be made.</p> <p>If the child death is a result of abuse or neglect the assessment must still be completed. Family Assessment cases must be changed to the Investigative track at the time of the fatality. The local county child welfare must make a case decision and place an individual on the RIL, if appropriate.</p> <p>In situations where the minor has reached their 18th birthday the assessment must be completed, if possible, and a case decision must be made.</p>	<p>DECISION MAKING IN CASES WITH NO CHILD IN THE HOME</p> <p>Completion of the assessment and a case decision allows the child welfare agency to maintain information on abuse or neglect to ensure the safety of children. It is important to continue to assess open cases of abuse and neglect of children particularly in situations where a fatality is likely the result of abuse and/or neglect.</p>
---	--

Notifications

Protocol – What you must do	Guidance – How you should do it
<p>The CPS Assessment case decision must be reported in writing to:</p> <ul style="list-style-type: none"> ● The caretakers or parents alleged to have abused, neglected, and/or rendered the child dependent; ● The primary caretakers or parents with whom the child resided at the time the agency initiated the CPS Assessment; ● Other parents as appropriate; ● Any agency in which the court has vested legal custody; ● The licensing authority as appropriate; ● The <u>RIL</u>, if appropriate, ● The Central Registry (Assessment completion in NC FAST fulfills this requirement); and ● All reporters, including those who reported the same allegations and incidents after the initial report was accepted. <p>Within <u>five</u> working days of the completion of the CPS Assessment, the reporter must be given written notice of the county child welfare services agency's findings, actions being taken, and the process for requesting a review by the District Attorney of the county child welfare services agency's decision not to file a juvenile petition. If the reporter waives the right to notice or is anonymous, this does not apply.</p> <p>For additional information, please see “Confidentiality” in the Intake section of the manual.</p> <p>REVIEW BY PROSECUTOR AT REQUEST OF REPORTER</p> <p>Upon receipt of the county child welfare services agency's decision not to petition the court, the person who made the report has five working days to notify the prosecutor to request a review of this decision. If a review is requested by the person who made the report, the county child welfare services agency must send a copy of the report and a summary of the assessment to the prosecutor within three working days.</p>	<p>The county child welfare services agency fulfills the requirement to notify the Central Registry by electronically submitting the Report to Central Registry / CPS Application (<u>DSS-5104</u>) to the North Carolina Division of Social Services. For additional information, see “Central Registry” in Cross Function Topics in the <u>NC Child Welfare manual</u>.</p>

Special Categories of Cases Requiring a CPS Assessment

Protocol – What you must do	Guidance – How you should do it
<p><u>CPS ASSESSMENTS INVOLVING MORE THAN ONE COUNTY</u></p> <p>Refer to “Jurisdiction” in Cross Function Topics in the NC Child Welfare manual for information on CPS Assessments involving more than one county. An open CPS Assessment must not be transferred to another county.</p> <p>Refer to “Conflict of Interest” in Cross Function Topics in the NC Child Welfare manual for information on providing Child Welfare Services when there is a conflict of interest or a perceived conflict of interest.</p> <p><u>CPS ASSESSMENTS OF OUT-OF-HOME PLACEMENTS</u></p> <p>Refer to “Jurisdiction” in Cross Function Topics in the NC Child Welfare manual for information on CPS Assessments involving reports of abuse and/or neglect in out-of-home placements.</p> <p><u>MALICIOUS CPS REPORTS</u></p> <p>A malicious report is one in which the reporter knowingly and willfully makes untrue statements that the juvenile is abused, neglected, and/or dependent. At the completion of the CPS Assessment, if the county child welfare worker states to their county child welfare supervisor that the report was a malicious report, the county child welfare supervisor brings this to the attention of the county child welfare services agency director.</p> <p>In response to a recommendation from the House Interim Committee on Child Abuse and Neglect, Foster Care and Adoptions the Division of Social Services, in collaboration with the North Carolina Association of County Directors of Social Services, procedures have been developed for documenting and tracking malicious reports.</p>	<p>A form has been developed to collect this information entitled, “Documentation of Malicious Reports.” The form should be completed at the time that the county child welfare services agency director and county child welfare supervisor meet to discuss the malicious report. The county child welfare worker assigned to the report does not participate in this conference. The form should contain no identifying information about the reporter or the family beyond the information that led the county child welfare services agency to suspect that the report was made maliciously. The form should be easily accessible by the appropriate staff but should never be placed in the child’s or family’s case record.</p>

Special Categories of Cases Requiring a CPS Assessment

Protocol – What you must do	Guidance – How to do it
<p><u>MEDICAL NEGLECT OF INFANTS WITH LIFE-THREATENING CONDITIONS</u></p> <p>Evaluating reports of suspected medical neglect of disabled infants with life-threatening conditions, also known as "Baby Doe cases", requires special procedures by county Departments of Social Services (hereafter, DSS). These procedures are an outgrowth of Federal rulings and U.S. Supreme Court cases in the 1980s. These rulings require that county DSS respond to reports of medical neglect of such infants, that the responsibility to report situations of possible medical neglect is clearly communicated to hospital staff, and that procedures for rapid response to such reports are in place and regularly updated.</p> <p>Legal Basis</p> <p>A “neglected child” means a person less than 18 years of age as defined in N.C.G.S §7B-101 as, “a minor victim of human trafficking; a juvenile who does not receive proper care, supervision, or discipline from the juvenile's parent, guardian, custodian, or caretaker; or who has been abandoned; or who is not provided necessary medical care; or who is not provided necessary remedial care; or who lives in an environment injurious to the juvenile's welfare; or who has been placed for care or adoption in violation of law.” A neglected child is also a disabled infant with a life-threatening condition from whom appropriate nutrition, hydration or medication is being withheld; a neglected child is also a disabled infant under one year of age with a life-threatening condition from whom medically indicated treatment, which in the treating physician's reasonable medical judgement, would be most likely to be effective in ameliorating or correcting such life-threatening conditions, is being withheld, unless in the treating physician's reasonable medical judgement any of the following conditions exist:</p> <ul style="list-style-type: none"> • Infant is chronically ill and irreversibly comatose • The provision of medical treatment would merely prolong dying, would not ameliorate or correct all of the life-threatening conditions, or would otherwise be futile in terms of the survival of the infant • The provision of medical treatment would be virtually futile in terms of the survival of the infant and under the circumstances the treatment would be inhumane <p>Institution means any public or private institution, facility, agency, group, organization, corporation, or partnership employing, directing, assisting, or providing its facilities to persons who, as a part of their usual responsibilities give care or services to children less than 18 years of age and any hospital or other health care facility providing treatment to infants with life-threatening conditions (formerly 10A NCAC 41.0303(6)).</p>	

Special Categories of Cases Requiring a CPS Assessment

Protocol – What you must do	Guidance – How to do it
<p>These definitions neither limit nor add to the duty of the director of the DSS to receive and assess all reports of medical neglect (N.C.G.S. § 7B-300, N.C.G.S. §7B-301, and N.C.G.S. §7B-302). The specifications in rule were made to clarify the special situations involving disabled infants and the institutions in which they may be found at the time a report is received.</p> <p>SPECIAL PROCEDURES</p> <p><u>Case Assignment</u> The medical neglect of disabled infants with life threatening condition, pursuant to Public Law 98-457 (“Baby Doe”) is considered a special type of neglect report and shall be assigned as an Investigative Assessment response.</p> <p><u>Contact with Local Hospitals and Health Care Facilities</u> To be prepared before an emergency exists, advanced planning must take place between the county DSS and the hospitals or health care facilities. Procedures for coordination and cooperation should be developed and implemented through a collaborative effort involving both systems. The procedures should maximize timely responses on the part of the county DSS and minimize disruption of activities in the hospital or health care facility.</p> <p>Each county director of social services must, at a minimum:</p> <ul style="list-style-type: none"> • Contact each hospital or health care facility located in the county that provides treatment services to infants to: <ul style="list-style-type: none"> • Provide the hospital or health care facility with information about the mandatory reporting law that applies to all persons • Provide the hospital or health care facility with procedures for making a report of suspected or known medical neglect to the local county DSS including the name and telephone number of contact persons for receiving reports during and after working hours • Obtain the name and telephone number of the person in the hospital or health care facility who will act as liaison with the local county DSS • Maintain a current list of hospital and health care facility liaison persons and update the information at least annually. <p><u>Conducting a Thorough Investigative Assessment</u> Because of the complex nature of the medical conditions that an infant might have, medical consultation will be needed in conducting the Investigative Assessment. The hospital or health care facility staff in which the infant is receiving care will, in most cases, be the primary resource for that consultation. In some situations, there will be a need to review medical</p>	

Special Categories of Cases Requiring a CPS Assessment

Protocol – What you must do	Guidance – How to do it
<p>records and/or obtain an independent examination. Ordinarily, a request would be made of the child's parents to sign a release allowing review of relevant information and/or to allow an independent exam. In the event the parent refuses and/or the hospital or health care facility will not allow access the county director of social services would initiate court action following existing provisions under the Juvenile Code (N.C.G.S. §7B-303, N.C.G.S. §7B-403, and N.C.G.S. §7B-404) for filing a petition.</p> <p><u>Collaboration Among Counties</u></p> <p>In some instances, a child will be hospitalized in a medical facility in one county and the county of residence is another. A report of suspected medical neglect may be received by either county. In the interest of acting immediately when a child's life may be threatened, the county DSS where the medical facility is located must assume lead responsibility for the Investigative Assessment. Close coordination and cooperation between the two counties are essential. Once the crisis situation is resolved the two counties may decide when it is appropriate to transfer the case to the county of residence for planning and arranging whatever ongoing services may be needed for the child and his family. For more information on jurisdictional issues during the provision of child protective services please refer to Cross Function Topics in the NC Child Welfare manual.</p> <p><u>SUBSTANCE AFFECTED INFANT</u></p> <p><u>Child Abuse Prevention and Treatment Act (CAPTA) and Comprehensive Addiction and Recovery Act of 2016 (CARA)</u></p> <p>As amended in 2010, CAPTA set forth requirements for states to address the needs of substance affected infants. In 2016, the President signed CARA into law which further amended CAPTA requirements. These two laws require states to have policies and procedures in place to:</p> <ul style="list-style-type: none"> • Require health care providers involved in the delivery and care of infants born with and identified as being affected by substance abuse (not just abuse of illegal substances as was the requirement prior to this change), withdrawal symptoms resulting from prenatal substance exposure or a Fetal Alcohol Spectrum Disorder (FASD), to notify child protective services (CPS) of the occurrence. • Ensure the safety and well-being of such infants following their release from the care of health care providers by developing a plan of safe care that addresses the health and substance use disorder treatment needs of both the infant and affected family or caregiver. 	

Special Categories of Cases Requiring a CPS Assessment

Protocol – What you must do	Guidance – How to do it
<ul style="list-style-type: none"> • Report in the National Child Abuse and Neglect Data System (NCANDS) • The number of infants identified as being affected by substance abuse or withdrawal symptoms resulting from prenatal drug exposure, or a Fetal Alcohol Spectrum Disorder; • The number of such infants for whom a plan of safe care was developed; and • The number of such infants for whom a referral was made for appropriate services, including services for the affected family or caregiver. • Develop and implement monitoring systems regarding the implementation of Plans of Safe Care to determine whether and in what manner local entities are providing referrals to and delivery of appropriate services for the infant and affected family. <p><u>“Substance Affected Infant” Defined by North Carolina Department of Health and Human Services (DHHS)</u></p> <p>CAPTA requires states to have policies and procedures requiring health care providers to notify the child protective services system if they are involved in the delivery of an infant born and identified as being affected by substance abuse or withdrawal symptoms resulting from prenatal drug exposure, or a Fetal Alcohol Spectrum Disorder.</p> <p>NC DHHS, along with its health care and substance use disorder treatment partners, have developed definitions for such infants under the guidance provided by the federal Administration for Children and Families (ACF) and the Substance Abuse and Mental Health Services Administration (SAMHSA).</p> <p>In North Carolina, health care providers involved in the delivery and care of such infants must notify the county child welfare agency in the form of a report upon identification of the infant as “substance affected.” A “substance affected infant” is an infant that meets one of the following NC DHHS definitions:</p> <ul style="list-style-type: none"> • Affected by Substance Abuse: <ul style="list-style-type: none"> • The infant has a positive urine, meconium or cord segment drug screen with confirmatory testing in the context of other clinical concerns as identified by current evaluation and management standards. <p style="text-align: center;">OR</p> <ul style="list-style-type: none"> • The infant’s mother has had a medical evaluation, including history and physical, or behavioral health assessment indicative of an active substance use disorder, during the pregnancy or at time of birth. • Affected by Withdrawal Symptoms: The infant manifests clinically relevant drug or alcohol withdrawal. • Affected by FASD: The infant is diagnosed with one of the following: 	

Special Categories of Cases Requiring a CPS Assessment

Protocol – What you must do	Guidance – How to do it
<ul style="list-style-type: none"> • Fetal Alcohol Syndrome (FAS) • Partial FAS (PFAS) • Neurobehavioral Disorder associated with Prenatal Alcohol Exposure (NDPAE) • Alcohol-Related Birth Defects (ARBD) <ul style="list-style-type: none"> • Alcohol-Related Neurodevelopmental Disorder (ARND) OR • The infant has known prenatal alcohol exposure when there are clinical concerns for the infant per current evaluation and management standards. <p>As specified in CAPTA, the notification is to ensure that services are provided to the infant and caregiver, but it does not establish a definition under Federal law of what constitutes child abuse or neglect. Furthermore, the requirement for notification should not be construed to mean that prenatal substance use is intrinsically considered child maltreatment. Therefore, while the notification is required, not every report about a substance affected infant will result in a CPS assessment.</p> <p><u>Plan of Safe Care and Referral to Care Management for At Risk Children (CMARC)</u> CAPTA requires that every infant “born with and identified as being affected by substance abuse, withdrawal symptoms resulting from prenatal drug exposure or FASD” has a plan ensuring his/her safety following the release from the care of healthcare providers.</p> <p>A Plan of Safe Care (POSC) is required for all substance affected infants regardless of whether the circumstances constitute child maltreatment.</p> <p>Therefore, a county child welfare agency must develop a Plan of Safe Care for each infant that is accepted for assessment as a “substance affected infant” report. To develop the Plan of Safe Care, the county child welfare worker must refer to and follow the <u>Child Welfare Resources for Substance Affected Infants and Plan of Safe Care</u> and complete the POSC form (DSS-6191) . A referral must also be made to the local CMARC program for all healthcare required notifications during the intake process.</p> <p>During the screening process, a child welfare agency may share confidential information with public and private agencies that are providing or facilitating protective services. To comply with confidentiality laws and to ensure that a plan of safe care can be created for every infant, it is important that the CMARC referral be made during the screening of the report and prior to making a determination to screen in or screen out the report. The timing of the referral is critical because</p>	

Special Categories of Cases Requiring a CPS Assessment

Protocol – What you must do	Guidance – How to do it
<p>confidentiality laws will prohibit a child welfare agency from making the referral to CMARC if the report has already been screened out and child protective services are no longer being provided.</p> <p>As is the current standard practice, any information that the child welfare agency obtains that is protected by federal regulations should not be disclosed absent a court order or proper client consent. Additionally, the name of the reporter must remain confidential.</p> <p>The components of the Plan of Safe Care should reflect and address:</p> <ul style="list-style-type: none"> • Discharge date • Household members and affected family or caregivers of the infant • Other identified participants • Family strengths and goals • Infant safety plan • Parent safety plan • Services • Parental agreement <p>The services include screening for referral to the North Carolina Infant Toddler Program (NC ITP) for early intervention services through the local Children’s Developmental Services Agency (CDSA). CMARC can work with all families on a voluntary basis to implement the Plan of Safe Care, particularly those that child welfare screens out.</p> <p><u>Intake and Screening of the Report</u></p> <p>A report that only alleges that an infant was exposed to substances prior to birth does not intrinsically meet the statutory definition of child abuse, neglect, or dependency. To determine whether a report about a substance affected infant should be accepted, the child welfare agency must examine the effect that the substance exposure has had on the infant and the infant’s health and safety. Only reports that meet the statutory definition of child abuse, neglect or dependency can be accepted.</p>	

Special Categories of Cases Requiring a CPS Assessment

Protocol – What you must do	Guidance – How to do it
<p>The county welfare child agency must refer to the Substance Affected Infant Screening Tool to screen for allegations of child maltreatment. Reports of child maltreatment of substance affected infants must be accepted and a CPS Assessment initiated when the information gathered is consistent with any of the following:</p> <ul style="list-style-type: none"> • The infant has received one of the following diagnoses: Fetal Alcohol Syndrome (FAS), Partial FAS (PFAS), Neurobehavioral Disorder associated with Prenatal Alcohol Exposure (NDPAE), Alcohol-Related Birth Defects (ARBD) or Alcohol-Related Neurodevelopmental Disorder (ARND). • The infant had a positive drug toxicology or is experiencing withdrawal symptoms. However, if it is known that the drug is a medication prescribed to the mother and is being used appropriately – per the prescribing provider – then the report should not be accepted on that basis alone. This includes medications prescribed for the treatment of opioid use disorders. • The mother had a positive drug toxicology at the time of infant’s birth AND she is demonstrating behaviors that impact her ability to provide care to the infant. • The mother had a medical evaluation or behavioral health assessment that is indicative of an active substance use disorder at the time of the infant’s birth AND she is demonstrating behaviors that impact her ability to provide care to the infant. • The mother had a positive drug toxicology at the time of the infant’s birth AND a review of county child welfare agency history revealed a pattern of substantiations or findings of Child Protective Services Needed or a particularly egregious finding that correlates with the allegations. <p>However, a mother’s prescribed and appropriate use of medications should not be coupled with county child welfare agency history to justify the acceptance of a report.</p> <ul style="list-style-type: none"> • The mother had a medical evaluation or behavioral health assessment that is indicative of an active substance use disorder at the time of the infant’s birth AND a review of county child welfare agency history revealed a pattern of substantiations or findings of Child Protective Services Needed or a particularly egregious finding that correlates with the allegations. 	

Special Categories of Cases Requiring a CPS Assessment

Protocol – What you must do	Guidance – How to do it
<p><u>Annual Data Report Requirements and Monitoring Systems</u></p> <p>The amended provisions of CAPTA also require that states report additional information through NCANDS and that states develop monitoring systems to ensure that appropriate referrals and services are being provided through the implementation of Plans of Safe Care.</p> <p>To report the annual data requirements and to inform a monitoring system, county child welfare agencies must collect the following data:</p> <ul style="list-style-type: none"> • The number of substance affected infants for which the agency received notification from a healthcare provider; • The number of infants and families for whom the agency developed a Plan of Safe Care; • The number of infants the agency referred to the CMARC for appropriate services; • The number of those infants who were accepted for CPS assessment; and • The number of those infants who were not accepted for CPS assessment. <p>The North Carolina Division of Social Services (DSS) will collect this data monthly.</p> <p>A DHHS interagency collaborative will meet quarterly to review the data collected by DSS and CC4C, determine gaps and needs, develop a plan of intervention and provide technical assistance at the local level.</p> <p>SUBSTANCE AFFECTED INFANTS AND THE CHILD WELFARE INTERVENTION</p> <p><u>Medication Assisted Treatment (MAT)</u></p> <p>The use of MAT to treat opioid use disorders is considered the recommended best practice and must be treated as such. No county child welfare agency shall discourage the use of MAT by a parent or caretaker through its assessment and case planning activities unless otherwise recommended by a substance use disorder treatment professional. MAT is defined in <u>NCGS § 7B-904</u> as the use of pharmacological medications administered, dispensed, and prescribed in a Substance Abuse and Mental Health Services accredited and certified opioid treatment program or by a certified practitioner licensed in this State to practice medicine, in combination with counseling and behavioral therapies, to provide a whole patient approach to the treatment of substance use disorders.</p> <p>Abrupt discontinuation of opioid use during pregnancy can result in premature labor, fetal distress and miscarriage. Additionally, pregnant women who stop using opioids and subsequently relapse are at a greater risk of overdose and</p>	

Special Categories of Cases Requiring a CPS Assessment

Protocol – What you must do	Guidance – How to do it
<p>death. There is also increased risk of harm to the fetus. Because Neonatal Abstinence Syndrome (NAS) – the common term used to represent the symptoms associated with opioid withdrawal in newborns – is treatable, MAT is typically recommended by treatment providers over abstinence or withdrawal.</p> <p>When a newborn is born substance affected and caretakers are engaging in MAT services, they should be considered compliant with substance use disorder treatment. Child welfare workers must still assess safety, risk of harm, and a caretaker’s capacity to keep the infant and any other children safe in the home.</p> <p>To counter misinformation about prescription opioid use the International Drug Policy Consortium issued the following statement in 2013:</p> <p>“Newborn babies are NOT born ‘addicted’ and referring to newborns with NAS as ‘addicted’ is inaccurate, incorrect, and highly stigmatizing. Portraying NAS babies as ‘victims’ results in the vilification of their mothers, who are then viewed as perpetrators, and further perpetuates the criminalization of addiction. Using pejorative labels...places these children at substantial risk of stigma and discrimination and can lead to inappropriate child welfare interventions. NAS is treatable and has not been associated with long-term adverse consequences. Mischaracterizing MAT as harmful and unethical contradicts the efficacy of MAT and discourages the appropriate and federally recommended treatment for opioid use disorders.”</p> <p><u>Filing of a Juvenile Petition</u></p> <p>A CPS Assessment involving a substance affected infant does not warrant an automatic filing of a juvenile petition with a request for nonsecure custody to ensure safety. Under no circumstances should a county child welfare agency remove an infant without first assessing risk and safety. The county child welfare agency must continue to make reasonable efforts to protect the infant in his or her own home and prevent placement as required by law and policy.</p> <p><u>Using the Plan of Safe Care During the Child Welfare Intervention</u></p> <p>While the safety agreement and Plan of Safe Care (POSC) are not intended to be duplicative interventions, they will likely address many of the same processes and issues. The major difference, however, is that the Plan of Safe Care should go beyond immediate safety factors to address the affected caretaker’s need for substance use and/or mental health treatment and the health and developmental needs of the affected infant. Additionally, it should identify the services and supports the caretaker needs to strengthen his or her capacity to nurture and care for the infant. The information gathered to complete the POSC will allow the worker to begin the case planning process with the family to ensure the infant’s safety when a caretaker may be struggling with a substance use disorder. When child welfare is involved a POSC</p>	

Special Categories of Cases Requiring a CPS Assessment

Protocol – What you must do	Guidance – How to do it
<p>must be developed with the family using the POSC form (DSS-6191). Please see Child Welfare Resources for Substance Affected Infants and Plan of Safe Care for details on the requirements for that plan.</p> <p>CMARC will be responsible for the implementation of the POSC with the family on a voluntary basis when child welfare is not involved. CMARC must be contacted as a collateral during the assessment. The child welfare worker must continue to follow the policy outlined in Section 1408 –Investigative and Family Assessments regarding the requirements of an assessment and safety planning.</p> <p>All components of the POSC may not have been met at the time of case decision; however, the child welfare worker should have assisted the family in addressing the safety concerns and a plan to address any other identified needs. Should the case require CPS In Home Services or Child Placement Services, the family service agreements must include the POSC in the case planning process.</p> <p>ADDITIONAL REQUIREMENTS FOR CASES INVOLVING SUBSTANCE AFFECTED INFANTS</p> <p><u>Safe Sleeping Arrangements</u></p> <p>Most infants in North Carolina who die due to sleep related causes do so when sleeping with another person. Due to the increased risk associated with sleep related infant death for substance affected infants, the child welfare worker must create a safe sleep plan with the family that ensures that the infant is returned to a separate sleep space at every sleep cycle. This must be documented in the case record.</p> <p>For information regarding sleep related infant deaths and recommendations to reduce the risk of occurrence, please refer to Safe Sleep NC at www.safesleepnc.org.</p> <p><u>Referral to Early Intervention Services</u></p> <p>Part C of the Individuals with Disabilities Education Act (IDEA) requires that a child under the age of 3 who is identified as “being affected by illegal substance use, or withdrawal symptoms resulting from prenatal drug exposure” be referred for early intervention services.</p> <p>In North Carolina, children who are identified as substance affected infants must be screened for referral to the North Carolina Infant Toddler Program (ITP) through the local Children’s Developmental Services Agency (CDSA) for early intervention services.</p>	

Special Categories of Cases Requiring a CPS Assessment

Protocol – What you must do	Guidance – How to do it
<p>Refer to the North Carolina Family Assessment of Strengths and Needs (DSS-5229) S6 - Child Characteristics to screen a child for referral to a CDSA.</p> <p><u>SAFE SURRENDER</u></p> <p>The CPS Assessment of a safely surrendered infant does not alter any of the requirements to complete a CPS Assessment.</p> <p><u>Initiation on Safe Surrender Cases</u></p> <p>The assigned county child welfare services agency must:</p> <ul style="list-style-type: none"> • Assume custody of the infant and file a petition alleging dependency. <ul style="list-style-type: none"> ○ If the infant has not received medical attention, arrange this immediately. Request that a physician evaluate the child, estimate a birth date, and complete a birth certificate with the name “Safe County Name Surrender.” If an original birth certificate is later found, the safe surrender version will be destroyed. ○ Arrange for placement of the infant. • Make reasonable efforts to locate the parents. <ul style="list-style-type: none"> ○ Initiate contact with law enforcement and request a search of the North Carolina Center for Missing Persons and other national and state resources to determine whether the infant is a missing child. ○ If the parent is identified: <ul style="list-style-type: none"> ▪ Efforts must be made to counsel the parent about the relinquishment of the child for the purpose of adoption (DSS-1804) and the benefits of completing the relinquishment on behalf of the surrendered child. If the biological parent signs the relinquishment forms, DSS does not have to adjudicate or pursue TPR to clear the infant for adoption from that parent. See “Adoption Services” (specifically the subsection about Legal Guides) in the NC Child Welfare manual. ▪ Inquiries must be made as to the medical history of the mother and father. ▪ A thorough CPS Assessment must be conducted, including an assessment of the safety of other children known to be in the family. <p>In situations where the identity of the parent(s) are known by any individual involved, the identity must be included in the assessment. An individual who safely surrenders an infant is free from criminal and civil liability. However, this does not change the requirement to make reasonable efforts to locate the parents, to prevent placement, and to reunify the family after placement.</p>	

Special Categories of Cases Requiring a CPS Assessment

Protocol – What you must do	Guidance – How to do it
<p>The parent does not have to provide information as to their identity.</p> <p><u>Case Decision for Safe Surrender Cases</u></p> <p>All required activities and Structured Decision-Making forms must be completed prior to making a case decision. Absent additional allegations, the case decision must reflect a finding of dependency.</p> <p><u>THERE MUST BE DOCUMENTATION IN THE FILE INDICATING THAT THE IDENTITY OF THE PARENT(S) IS UNKNOWN AS THIS WAS A SAFE SURRENDER.</u></p>	

Special Categories of Cases Requiring a CPS Assessment

Protocol – What you must do	Guidance – How to do it
<p><u>HUMAN TRAFFICKING</u></p> <p>The requirements of a CPS Assessment are not altered when it involves allegations of human trafficking. County child welfare workers must assess the safety and risk of human trafficking victims within the context of North Carolina child welfare policy and practice.</p> <p>However, there are additional requirements for all child welfare cases involving confirmed or suspected human trafficking of a child. See “Human Trafficking” in Cross Function Topics in the NC Child Welfare manual for additional protocol and guidance.</p> <p>The North Carolina Safety Assessment (DSS-5231) and assessment tools are only completed with parents, guardians, custodians, or caretakers. These tools must not be completed with perpetrators who are not a parent, guardian, custodian, or caretaker. In cases where the alleged perpetrator is not a caretaker, the county child welfare worker must assess the parent, guardian, custodian, or caretaker’s ability and/or willingness to keep the child safe.</p> <p>County child welfare workers must collaborate with human trafficking victim organizations and advocates to address the unique safety issues for children who are victims of human trafficking. See list of Service Providers and Other Referrals in Human Trafficking Cases by County.</p>	<p>When conducting a CPS Assessment involving allegations of human trafficking, county child welfare workers should assess the circumstances with consideration to the known risk factors and indicators of human trafficking:</p> <p>Risk factors:</p> <ul style="list-style-type: none"> • History of running away or getting kicked out of home; • History of homelessness or housing instability; • History of sexual abuse; • History of physical abuse; • History of sexual offense; • History of delinquent or reckless behavior (involvement with law enforcement or juvenile justice); • History of neglect or basic needs not having been met; • History of alcohol or substance use disorder; • Current or past involvement in the child welfare system; • History of depression/mood disorder; • Exposure to domestic violence; • Family instability; • Excessive absences from school; • Identifies as lesbian, gay, bisexual, or transgender (LGBT); • Has disabilities, especially intellectual disability; • Immigration status; • Poverty; • Unemployment; and • Lack of transportation. <p>Indicators:</p> <ul style="list-style-type: none"> • Visible signs of abuse such as unexplained bruises, cuts, marks; • Fear of person accompanying them;

Special Categories of Cases Requiring a CPS Assessment

Protocol – What you must do	Guidance – How to do it
<p>When making a case decision on an assessment of suspected human trafficking, the county child welfare worker must determine what role the parent played, if any. There must be a substantiation of both abuse and neglect for a child who is found to be a human trafficking victim. If the child is found to be a victim of sexual servitude under G.S. 14-43.13, sexual abuse must be one of the maltreatment types found. No perpetrator name is entered on the DSS-5104 in cases where the perpetrator is not the parent, guardian, custodian, or caretaker. See the “Central Registry” section of Cross Function Topics in the NC Child Welfare manual.</p>	<ul style="list-style-type: none"> • Wearing new clothes of any style or getting hair or nails done with no financial means to do this independently; • Exhibit hyper-vigilance or paranoid behavior; • A young person with a tattoo which he or she is reluctant to explain; • Frequent or multiple sexually transmitted diseases, STIs, or pregnancies; • Truancy or tardiness from school; • Unaccounted for times, vagueness concerning whereabouts, and/or defensiveness in response to questions or concerns. <p>The following risk factors, indicators and vulnerabilities should be considered for foreign nationals:</p> <ul style="list-style-type: none"> • History of trauma, including civil unrest or prolonged community violence; • Social isolation; • Lack of legal status (documentation). <p>These lists may not be inclusive of all risk factors, indicators and vulnerabilities.</p> <p>The child’s home of origin should also be assessed, and the county child welfare worker should consider and/or ask questions about:</p> <ul style="list-style-type: none"> • The child or youth’s decision to leave home, if applicable; • Whether the parent/caretaker allowed access by the alleged perpetrator; • If there was active or passive participation in the trafficking by the parent/caretaker; • The ability of the parent/caretaker to care for the child; • The ability of the parent/caretaker to prevent the child or youth from running away; and • The legal connection of any individual claiming to be a parent, relative, caregiver, or legal custodian to the child. In many cases traffickers will present themselves as a parent, relative, or legal custodian

Special Categories of Cases Requiring a CPS Assessment

Protocol – What you must do	Guidance – How to do it
<p><u>RESPONDING TO MISSING AND ABDUCTED CHILDREN</u></p> <p>The Trafficking Victims Prevention and Protection Reauthorization Act of 2022 (Public Law 117-348) requires agencies to report immediately (no later than 24 hours) to law enforcement any missing or abducted children for entry into the National Crime Information Center (NCIC) database, and to the National Center for Missing and Exploited Children.</p> <p>It also reauthorizes and amends the Trafficking Victims Protection Act (TVPA) to include additional communication and details when title IV-E agencies report missing or abducted children to law enforcement and the National Center for Missing and Exploited Children (NCMEC).</p> <p>REPORTING REQUIREMENTS</p> <p>Upon learning a child is missing or abducted, county child welfare agencies must notify law enforcement immediately. If there are any safety concerns identified after the child has gone missing, a new</p>	<p>Additionally, the county child welfare worker should consider the possible connection collateral contacts have with the trafficking perpetrator.</p> <p>Immediate safety issues may include but are not limited to:</p> <ul style="list-style-type: none"> • Access of the trafficker to the child; • Child or youth’s lack of safe housing or a safe place to stay; • Safety issues in the home of the parent, guardian, custodian, or caretaker; and • Risk of child or youth running away. <p><u>Abduction of Children</u> – Per N.C.G.S. § 14-41 any person who, without legal justification or defense, abducts or induces any minor child who is at least four years younger than the person, to leave any person, agency, or institution lawfully entitled to the child’s custody, placement, or care.</p> <p><u>High Risk Child</u> – The missing child’s safety is severely compromised for one or more of the following reasons:</p> <ul style="list-style-type: none"> • The child is believed to be or has been abducted; • The child is known or believed to be a victim of human trafficking (sex trafficking, labor trafficking, child trafficking, or both) • The child is believed to be in the company of adults who could endanger their safety; • The child is younger than 13 years of age and/or is believed to be out of the zone of safety for their age or developmental stage; • The child has one or more health conditions that, if not treated daily, will place the child at severe risk;

Special Categories of Cases Requiring a CPS Assessment

Protocol – What you must do	Guidance – How to do it
<p>CPS report must also be made along with notification to law enforcement.</p> <p>REQUIREMENTS FOR COUNTY CHILD WELFARE WORKERS</p> <p>When a child that the county child welfare services agency is actively involved with is missing, the agency must:</p> <ul style="list-style-type: none"> • Report and/or assist the caretaker in making a report to law enforcement as soon as it is known that the child is missing or abducted. • Check the National Center for Missing and Exploited Children to see if the child(ren) or youth has been reported missing and the appropriate local law enforcement agency to see if the child(ren) or youth has been reported missing/runaway. County agencies shall maintain regular communication with NCMEC and law enforcement agencies in efforts to provide a safe recovery of a missing or abducted child or youth, including by sharing information pertaining to the child’s or youth’s recovery and circumstances related to the recovery. County agencies shall include in their reports, to NCMEC and law enforcement agencies the following information, where reasonably possible: <ul style="list-style-type: none"> ○ A photo of the missing or abducted child or youth; and ○ A description of the child’s or youth’s physical features, such as height, weight, sex, ethnicity, race, hair color, and eye color; and ○ Endangerment information, such as the child’s or youth’s pregnancy status, prescription medications, suicidal tendencies, vulnerability to being sex trafficked, and other health or risk factors; and 	<ul style="list-style-type: none"> • The child is drug dependent, including prescribed medication and/or illegal substances, and the dependency is life-threatening; • The child has severe emotional problems that, if not treated, will place the child at severe risk; • The child has a developmental disability that impairs the child’s ability to care for him/herself; • The child is pregnant and/or parenting and the infant/child is believed to be with their parent(s); • The child is missing more than 24 hours before being reported to law enforcement; • The child is believed to be in a life-threatening situation; • The child’s absence is inconsistent with their established patterns of behavior and the deviation is not readily explained; and/or • Other circumstances involved in the disappearance that would cause a reasonable person to conclude that the child should be considered “at imminent risk.” <p><u>Kidnapping</u> – Per N.C.G.S. § 14-39 any person who shall unlawfully confine, restrain, or remove from one place to another, any other person 16 years of age or over without the consent of such person, or any other person under the age of 16 years without the consent of a parent or legal custodian of such person.</p> <p><u>Missing Child</u> – Per N.C.G.S. § 143B-1011, a juvenile as defined in N.C.G.S § 7B-101 whose location has not been determined, who has been reported as missing to a law enforcement agency, and whose parent’s, spouse’s, guardian’s, or legal custodian’s temporary or permanent residence is in North Carolina or is believed to be in North Carolina.</p>

Special Categories of Cases Requiring a CPS Assessment

Protocol – What you must do	Guidance – How to do it
<ul style="list-style-type: none"> ○ County child welfare worker’s contact information or other preferred point of contact (e.g., the worker’s supervisor). ● Reports to National Center for Missing and Exploited Children (NCMEC) and local law enforcement agencies must be made immediately (and later than 24 hours) after the agency receives information about missing or abducted foster children. ● Provide immediate verbal notifications to the appropriate law enforcement agency, and follow up by sending a subsequent written notification within 48 hours; <ul style="list-style-type: none"> ○ NOTE: A copy of the law enforcement report must be obtained for the case file. ● Document in the case record or Child Welfare Information System electronic record notification to the appropriate parties (law enforcement, NCMEC, and courts) and the agency’s continuing efforts to collaborate with law enforcement, family members, NCMEC, and other appropriate persons to locate the child/youth. <p>These tasks must be completed within 24 hours of the time of notification.</p> <p>Additional Information that must be shared with law enforcement as known in cooperation with the caretaker includes:</p> <ul style="list-style-type: none"> ● A photo of the missing or abducted child or youth; and ● County child welfare worker’s contact information or other preferred point of contact (e.g., the worker’s supervisor). 	<p><u>Missing Foster Child</u> – A child who has either left voluntarily (ran away) or involuntarily (abduction, kidnapped, or lost), and cannot be accounted for by the agency responsible for their care and placement.</p> <p><u>Runaway</u> – A child who has voluntarily left their placement provider or home and whose whereabouts are either unknown by the child’s parent, guardian, custodian, caretaker, foster parent, or county child welfare worker or whose whereabouts are unknown by the child’s parent, guardian, custodian, caretaker, foster parent, or county child welfare worker but who maintains periodic contact with the county child welfare worker or others.</p> <p><u>Regular Communication with National Center for Missing and Exploited Children and Local Law Enforcement Agencies</u></p> <p>Policy states county agencies shall maintain regular communication with NCMEC and law enforcement agencies in efforts to provide a safe recovery of a missing or abducted child or youth. Communication by a county agency shall occur at a minimum of every two weeks, with a county Director having discretion for more frequent contact as needed. Assessment workers can access NCMEC regarding contact information and the steps for reporting missing children at https://www.missingkids.org/gethelpnow/isyourchildmissing.</p> <p>Factors that should be assessed to determine a child or youth’s risk of running away include, but are not limited to:</p> <ul style="list-style-type: none"> ● History of running away; ● Demonstrating a desire to run (or stating a desire to run);

Special Categories of Cases Requiring a CPS Assessment

Protocol – What you must do	Guidance – How to do it
<ul style="list-style-type: none"> • The child or youth’s full name, aliases and nicknames, age and date of birth, social security number, driver’s license number (if applicable), and other biographical information; • A description of the child or youth (i.e., height, weight, hair color, eye color, skin color, braces, clothes worn, book bag, shoes, contact lenses or glasses, dentures, gold or silver teeth, any impairments [physical, hearing, speech, vision], moles, and scars, body piercings, tattoos) • Physical or psychological conditions, developmental delays, or any condition that may affect the ability of the child or youth to respond to environmental dangers; • Other factors of endangerment, such as young age, hazardous location, medical needs, disability, etc.; • Medication and/or history of suspected substance use/abuse; • The child or youth’s custody status (birth certificate, custody order); • Type of missing episode (if known), including runaway, family abduction, non-family abduction, or other; • When, where, and with whom the child or youth was last seen; • Possible method of travel (e.g., car, bicycle, public transportation, on foot); • Names and addresses of friends, relatives, present and former placement providers, including childcare facilities/staff, and acquaintances; • Locations the child or youth is known to frequent; • Suspected destinations and accomplices; and • Prior disappearances and outcomes. 	<ul style="list-style-type: none"> • Demonstrating independence, including an ability to survive on the streets; • Demonstrating limited social skills and/or peer relationships; • Have strong bonds with siblings, but siblings are not placed with siblings; • Have a history of engaging in risky behavior; • Have a history of out-of-home placements; • Fall between the ages of 13 and 18 years old; • Have a record of school absences; • Have significant emotional issues; • Abuse alcohol or other substances; • Have an unstable family/home environment; • Seem to accept placement/custody; • Have history of juvenile referrals and/or arrests; and • Reported abuse or other victimization. <p>Factors that should be assessed to determine the child’s risk of being abducted by a parent or family member include, but are not limited to:</p> <ul style="list-style-type: none"> • Family members have threatened abduction (or there has been a prior incidence of abduction);

Special Categories of Cases Requiring a CPS Assessment

Protocol – What you must do	Guidance – How to do it
<p>If a child or youth is identified as “high risk,” this must be communicated to law enforcement.</p> <p>REQUIREMENTS FOR SUPERVISORS</p> <p>Upon notification that a child or youth is missing, the supervisor must:</p> <ul style="list-style-type: none"> • Within 24 hours, confirm the county child welfare worker has completed all the required reports and contacts as described above; • Assist the worker in developing and implementing a plan that contains specific strategies to locate the missing child or youth and assure the child and youth’s safety as quickly as possible; • Confirm that the plan is documented in the Child Welfare Information System record and include weekly activities to locate the child; • Ensure that the plan is revised, as needed, to ensure progress is made toward locating the child and establishing their safety; • Meet with the worker on a weekly basis after the initial reporting requirements are completed; • If the child is high risk, obtain and review weekly progress reports from the worker that include: <ul style="list-style-type: none"> ○ Ongoing strategies and efforts to determine the child or youth’s whereabouts; ○ Contacts with law enforcement and others; ○ Additional steps taken to assist in finding the child; ○ A placement plan for when the child is located; and 	<ul style="list-style-type: none"> • Limited ties to the area or have family/social support in another community; • History of mental illness; • Feel alienated from the legal system; • History of child abuse/neglect; • History of alcohol/substance abuse; • History of unlawful behavior and/or arrests; • Do not accept relevant court orders; • Exhibit a desire to retaliate; • History of short-term employment or unemployment; and • Stability of relationship with the other parent. <p>The National Center for Missing and Exploited Children (NCMEC) will fax the county child welfare worker a questionnaire which includes an Information Release and Verification Form requiring the guardian’s signature or caseworker. This form is to be completed and faxed back to NCMEC.</p> <p>Upon receipt of the release of information and the child’s photograph, NCMEC will publish the child’s photograph on its website and distribute posters of the child both locally and nationally. The child’s name and identifying information will be published with their photograph. Providing information to NCMEC, including the child’s photograph, DOES NOT violate North Carolina confidentiality laws and rules.</p>

Special Categories of Cases Requiring a CPS Assessment

Protocol – What you must do	Guidance – How to do it
<p>Ensure all supervisory meetings are documented in the Child Welfare Information System.</p> <p>SEARCHING FOR MISSING CHILDREN AND YOUTH</p> <p>In addition to the steps described above, specialized interventions must be considered, depending on whether the child has been abducted, is missing, or is missing with periodic contacts with the family/worker.</p> <p><u>Abducted Children and Youth</u></p> <p>If the child is believed to have been abducted, the county child welfare services agency’s efforts to locate the child must focus on the child’s relationship with the abductor and the agency must work closely with law enforcement. In addition, the following must be completed on a weekly basis:</p> <ul style="list-style-type: none"> • Contact law enforcement to both provide and obtain any new information regarding the alleged/suspected abductor; • Contact the assigned NCMEC case manager; and • Contact with caretakers and collaterals and others in the child’s family or Safety Network to obtain new information on the suspected/alleged abductor and the child or youth. <p><u>Missing Children and Youth</u></p> <p>When a child’s whereabouts are unknown, and/or the circumstances of the child’s disappearance are unknown, the county child welfare worker must make a sustained effort to locate the child by contacting the following individuals, agencies, or organizations each week:</p>	<p>It is important to inform law enforcement about any circumstances that could severely compromise the safety of a child or youth who is missing. These circumstances include anything that would fall in the definition of a <u>high risk</u> child listed above. This should NOT be confused with a determination on the NC Risk Assessment.</p> <p>When a child is located, careful consideration should be given to the reasons the child ran away. The county child welfare worker should interview the caregiver and the child separately to determine why the child ran away. Workers should carefully assess the factors associated with the child or youth’s disappearance and their experiences while absent to address possible safety and risk in safety planning with the family.</p> <p>The worker has the responsibility to ensure safety and should continue an assessment until any safety issues caused by the caretaker, if any, have been resolved. The worker may need to send the case to In Home services while the child is still missing to continue addressing safety in the home with the caretaker.</p>

Special Categories of Cases Requiring a CPS Assessment

Protocol – What you must do	Guidance – How to do it
<ul style="list-style-type: none"> • Local police, sheriff’s office, or other law enforcement agency working to locate the child or youth; • The parent/caretaker responsible for the child • Collaterals and the members of the family’s Safety Network <p><u>Missing Children and Youth with Periodic Contacts</u></p> <p>The county child welfare worker must make every effort to return the child to an authorized placement. In addition to making required contacts listed above, the following information must also be sought from the missing child or youth:</p> <ul style="list-style-type: none"> • The child’s location at the time of contacts; • Any information about where they are staying currently or for any period; • Any information about the individuals that they may be with; • Information about the health and safety of the child/youth (if parenting, also inquire about the health and safety of the infant or child); • Whether they are attending school and where; • Whether they are employed and where; and • Any contact they have made with family members, friends, probation and parole agents, etc <p>If the county child welfare agency confirms that the child is on the registry, there must be communication with the caretaker and collaterals regarding the status of the child’s whereabouts at every contact until the child has been located or case closure. This must be documented in the case record. At case decision, law enforcement must be notified of the decision of the agency regarding the case.</p>	

Special Categories of Cases Requiring a CPS Assessment

Protocol-What you must do	Guidance-How to do it
<p><u>VULNERABLE JUVENILES</u></p> <p>The requirements of a CPS Assessment are not altered when it involves allegations of a Juvenile Justice (JJ) involved juvenile. County child welfare workers must assess the safety and risk of vulnerable and delinquent juveniles within the context of North Carolina child welfare policy and practice.</p> <p><u>N.C.G.S. 7B-101</u> adds “whose parent, guardian, or custodian has refused to follow the recommendations of the Juvenile and Family Team made pursuant to Article 27A” to the neglect definition. This addition is referencing vulnerable juveniles defined in N.C.G.S. 7B-1501(27b) as “any juvenile who, while less than 10 years of age but at least 6 years of age, commits a crime or infraction under State law or under an ordinance of local government, including violation of the motor vehicle laws, and is not a delinquent juvenile.” If the parent, guardian, or custodian is refusing to follow the recommendations of the Juvenile and Family Team, AND this refusal leads to or creates substantial risk of abuse, neglect, and/or dependency of the juvenile, a report should be accepted.</p> <p>The Juvenile and Family Team is an intended program to keep vulnerable juveniles from court interaction. If there are concerns of maltreatment the juvenile court counselor is required to make a report to the local child welfare agency who will screen for abuse, neglect and/or dependency. The juvenile court counselor will offer services to the caretakers of vulnerable juveniles. Child welfare must assess and provide any related services to caretakers that are necessary to ensure the child(ren)’s safety regardless of the families’ decision to cooperate with Juvenile Justice.</p> <p>Vulnerable juveniles and their caretakers are served through case management services provided by Juvenile Justice for six months with an extension for up to three months per N.C.G.S. 7B-1706.1. Vulnerable</p>	<p>Child welfare workers who are conducting assessments involving any youth involved in the Juvenile Justice system, including vulnerable juveniles, should focus their attention on the parent’s behaviors and whether that behavior or refusal to engage in a recommended behavior is putting the child at risk of abuse, neglect, and/or dependency. The participation of child welfare in any Juvenile Justice recommendations should remain focused on the action or inaction of the parent and its risk of harm to the child.</p> <p>The child welfare worker needs to work with the juvenile court counselor to ensure that the safety concerns for the juvenile have been addressed. It is the responsibility of the juvenile court counselor to arrange any Juvenile Justice recommended services.</p> <p>The participation of child welfare workers in the Juvenile and Family Team should only occur when there is child welfare involvement with the family.</p>

Special Categories of Cases Requiring a CPS Assessment

juveniles are defined as “any juvenile who, while less than 10 years of age but at least 6 years of age, commits a crime or infraction under State law or under an ordinance of local government, including violation of the motor vehicle laws, and is not a delinquent juvenile.”

The Juvenile and Family Team is a collaborative group made up of the parent, guardian, or custodian, DSS, LME/MCO, local education authority, and any other community stakeholders involved with the family who meet to develop recommendations for services for vulnerable juveniles and their families.

Article 27A includes a list of services that can be recommended to include:

- Attend all scheduled meetings with the juvenile court counselor
- Attend all parental responsibility classes.
- Obtain medical, surgical, psychiatric, or psychological evaluation or treatment for the vulnerable juvenile or parent/guardian/custodian
- Compliance with recommendations of the juvenile court counselor

Assessment Track: Family and Investigative Assessments

MRS Requirements

The strategies of the Multiple Response System (MRS) impacts CPS Assessments through:

- The ability to assign CPS Assessments to one of two tracks:
 - The Family Assessment; or
 - The Investigative Assessment.
- The requirement for collaboration between CPS and:
 - Work First; and
 - Law Enforcement (LE).

The purpose of the two assessment tracks is to:

- Protect the safety of children in the most severe cases by not treating all reports in the same way, and missing some clear need for immediate action;
- Engage some families in services that could enable them to better parent their children;
- Not overlook vital information about the strengths of the family, the supports they have, and their motivation to change; and
- Better serve many of the families reported to CPS in ways that focus more on helping rather than “punishing” them.

Family-centered practice and the concept of involving parents in decision making throughout service provision is applicable to both Family Assessments and Investigative Assessments. The county child welfare worker must take the time to engage the family, to recognize the family’s strengths, to pay attention to the words used when interacting with families, and to act as a change agent by giving the family choices that guide the family with planning and transitions.

Collaboration with Law Enforcement on Investigative Assessments supports:

- Achieving joint efforts in interviewing and ensuring safety of families and children;
- Ensuring an effective working relationship;
- Holding perpetrators accountable for harming children;
- Reducing the number of interviews children experience, thereby preventing and reducing re-traumatization; and
- Enhancing collection of evidence for criminal prosecution.

Collaboration with Work First on all CPS Assessments will impact families through:

- Reducing the number of times family members need to repeat the same information;

Assessment Track: Family and Investigative Assessments

MRS Requirements
<ul style="list-style-type: none"> ● Involving Work First as a preventative effort; ● Reducing the number of children needing CPS and Permanency Planning services; and ● Preventing recidivism of abuse, neglect, and dependency by providing ongoing services through Work First.
<p><u>FAMILY AND INVESTIGATIVE ASSESSMENTS: DEFINITIONS AND WHEN TO USE EACH APPROACH</u></p> <p><u>Family Assessment</u></p> <p>The Family Assessment track is a response to selected reports of child neglect and dependency using a family-centered approach that is protection- and prevention-oriented and that evaluates the strengths and needs of the juvenile’s family, as well as the condition of the juvenile. The Family Assessment track is based on family support principles and offers a much less adversarial approach to a CPS Assessment. The Family Assessment track focuses more on establishing a partnership with the family and less on the authoritarian approach. The goal of this track is to develop true partnerships to ensure safety of the child.</p> <p><u>Investigative Assessment</u></p> <p>The Investigative Assessment track is a response to reports of child abuse and selected reports of child neglect and dependency using a formal information gathering process to determine whether a juvenile is abused, neglected, or dependent.</p>

Protocol – What you must do	Guidance – How to do it
<p><u>WHEN TO USE EACH APPROACH</u></p> <p>See Intake in the NC Child Welfare manual for more information.</p>	<p>The county child welfare services agency may assign any valid CPS report (abuse, neglect, and/or dependency) to the Investigative Assessment track, if deemed necessary to ensure the safety of the child.</p> <p>The county child welfare services agency may assign any valid CPS report alleging neglect and/or dependency as a Family Assessment except for certain specific neglect cases.</p>

Assessment Track: Family and Investigative Assessments

Protocol – What you must do	Guidance – How to do it
<p><u>SWITCHING APPROACHES/TRACKS</u></p> <p>All decisions to change assessment response tracks must be done with supervisory approval. Documentation in the record must clearly show why such a decision was made to switch approaches and how it helped ensure the safety of the child.</p>	<p>A CPS Investigative Assessment may be switched to a Family Assessment response if the report could have been assigned as such if the true situation was known at CPS Intake.</p> <p>Any report initially initiated using a Family Assessment response may be switched to an Investigative Assessment if the report should have been assigned as such if the true situation was known at CPS Intake.</p> <p>Any instance in which the child's safety cannot be ensured through the Family Assessment response should be staffed with the supervisor for consideration of switching to the investigative approach. This may be due to lack of parental cooperation or changing circumstances.</p> <p>Switching tracks during a CPS Assessment should not be done frequently or without a thorough discussion of the case between the county child welfare worker and the county child welfare supervisor.</p> <p>There may be instances during a Family Assessment that require the agency to file a petition with the Juvenile Court to protect the child. The agency is not required to switch to an Investigative Assessment in these cases. A finding of Child Protective Services Needed would be appropriate to document the safety and risk issues and how those safety and risk issues prevent the child from remaining safely in the home.</p>

Assessment Track: Family and Investigative Assessments

Protocol – What you must do	Guidance – How you should do it
<p><u>FAMILY ASSESSMENT</u></p> <p>INITIAL CONTACT</p> <p>The county child welfare worker must initiate face-to-face individual interviews with each child within 72 hours or sooner, based on the determination of the response timeframe. The county child welfare services agency must decide with whom to make the initial contact based on the allegations and the situation.</p> <p>The county child welfare services agency must contact the parent/caretaker to schedule the initial family contact. If the county child welfare services agency is unable to reach the parent/caretaker to schedule the initial family contact, initiation with the child must still occur within the designated timeframe. Initiation with the child(ren) can occur in this situation without scheduling the contact and without the need to switch the assessment track/approach.</p> <p>When the county child welfare worker is unable to initiate the assessment within the prescribed timeframe, there must be documentation in the case record describing the diligent efforts made and reasons why they were unsuccessful.</p> <p>For DV cases, refer to DV initiation protocol.</p>	<p>The Family Assessment allows much latitude in how assessments are initiated and completed. In using a family-centered approach, the first face-to-face contact on most cases will be with all family members together, followed by individual contact with each child, separate from the parent, caretaker, and/or perpetrator. However, each case should be addressed as unique and distinctive, and the approach should be adjusted to the needs of each family.</p> <p>Attention should be paid to verbal and non-verbal cues from the child that might lead the county child welfare worker to feel that this child needs to be interviewed in a different setting as well. Each child should be interviewed in the way that will best provide safety and build rapport with the family for future services. As always, safety is the first concern, while keeping in mind the goal of respecting and partnering with parents.</p> <p>If the CPS report alleges that the children have marks/injuries, the county child welfare worker should observe the marks as a part of the Family Assessment. To remain as family-centered as possible and ensure the parents are engaged in the Family Assessment, this should be done in the presence of the parents if the safety of the child is not compromised as a result.</p> <p>The Family Risk Assessment of Abuse/Neglect and Family Assessment of Strengths and Needs tools should be introduced to the family during the initial meeting while explaining the Family Assessment process. This will allow the family to be fully informed about the Family Assessment process and what information the agency will use to make the case finding. If a family informs the county child welfare worker that it is</p>

Assessment Track: Family and Investigative Assessments

Protocol – What you must do	Guidance – How you should do it
	<p>their desire not to have the tools completed with them, the county child welfare worker should use their knowledge of the tools as a resource to refer to during the Family Assessment or while explaining the case finding. County child welfare workers should not force a family to have the tools completed in their presence as this is the family’s choice. Introducing the tools to the family early in the assessment process can also “bring families along” as partners in the Family Assessment and reduce opportunities for misunderstanding. It naturally follows that the family will be offered the opportunity to sign the forms. There is ample space on the tools for this, but no expectation for signatures.</p>
<p>FAMILY ASSESSMENT CASE FINDINGS</p> <p>The purpose of the case decision is to determine whether a family is in need of child protective services.</p> <p>Child Protective Services Needed - This finding is appropriate when neglect and/or dependency was found to have occurred, and where there are safety issues and a future risk of harm, the agency must provide non-voluntary protective services to ensure the safety of the child. The finding of Child Protective Services Needed must be made, and the county child welfare services agency must continue to provide involuntary CPS In-Home Services in every case the agency believes:</p> <ul style="list-style-type: none"> • The family must be involved with services (of any type, provided by any agency or individual) for the child to safely remain in the home; or • The child would not be safe if the family ever becomes noncompliant with services. 	<p>FAMILY ASSESSMENT CASE DECISION-MAKING</p> <p>While the Family Assessment approach is family-centered, the case decision is a decision that rests with the county child welfare services agency. The family does not have equal decision-making power.</p> <p>In determining the severity of maltreatment, consideration should be given to the degree of harm, level of severity, extent of injury, egregiousness, gravity, and the seriousness of maltreatment. In determining current safety, consider safety issues that exist at the time of making the case decision.</p> <p>Findings of Child Protective Services Needed should be made for situations in which the safety and risk of harm is so great that the agency cannot walk away from this family without either providing protective services or monitoring those provided by another agency or provider. <u>All children referred to In- Home services may not be at risk of removal.</u> The NC SDM Family Risk Assessment of Child Abuse/Neglect is used to assess risk of maltreatment recurring.</p>

Assessment Track: Family and Investigative Assessments

Protocol – What you must do	Guidance – How you should do it
<p>A finding of Child Protective Services Needed must be made if the answer is yes to one or more of the questions on the structured CPS Assessment Documentation Tool (DSS-5010) concerning frequency and severity of:</p> <ul style="list-style-type: none"> ● Maltreatment; ● Current safety issues; ● Risk of future harm; and ● Child in need of protective services. <p>There must be documentation to support the answers included on the case decision tool.</p> <p>If the decision of the North Carolina Safety Assessment is “Safe”, and the findings of the North Carolina Family Risk Assessment of Abuse/Neglect and the North Carolina Family Assessment of Strengths and Needs are both “Low,” then the case would not be found “Child Protective Services Needed,” unless there are unusual circumstances where there is a continued need to ensure safety. In those cases, the supervisor must complete the “Rationale for Case Decision/Disposition” to justify the change.</p> <p>Services Provided, Child Protective Services No Longer Needed - This finding is appropriate for all CPS reports of neglect and dependency assigned to the Family Assessment response in which the safety of a child and future risk of harm were at some point in the assessment high enough to require non-voluntary services, but the successful provision of services during the assessment has mitigated the risk to a level in which involuntary services are no longer necessary to ensure the child’s safety. To close cases with this finding, at the time of case decision, the child cannot have current or ongoing neglect and/or dependence concerns, and the safety and future risk of harm of the child is not an issue. This case decision can only be</p>	<p>The county child welfare worker should discuss the outcome of the Family Assessment with the family face-to-face after the case finding of Child Protective Services Needed has been made. The discussion should include the actions and behaviors that have led to safety concerns and the changes and services that will address the safety issue or risk of harm. The family should also be notified in writing within seven working days.</p> <p>If the initial assessment indicates a risk level of “Moderate” or higher, and the family receives services which lead to a reduction in the risk level at the close of the assessment, such that non-voluntary services are no longer needed, the finding should be Services Provided, Child Protective Services No Longer Needed. The county child welfare worker should discuss the outcome of the Family Assessment with the family face-to-face after the case finding of Services Provided, Child Protective Services No Longer Needed has been made. The discussion should include the actions and behaviors that led to the safety concerns</p>

Assessment Track: Family and Investigative Assessments

Protocol – What you must do	Guidance – How you should do it
<p>chosen when non-voluntary protective services are not required to keep the children safe. A case decision of Services Provided is not appropriate for cases where the family is engaged in service provision that if ended once the case is closed would result in safety concerns for the children.</p> <p>Child Protective Services Not Needed - This finding is appropriate for all CPS reports of neglect and dependency assigned to the Family Assessment response in which the safety of the child is not an issue, there is no concern for the future risk of harm to the child. This case decision is chosen when non-voluntary protective services are not required to keep the children safe.</p>	<p>as well as the changes and services that are now in place that have mitigated the safety issue or risk of harm and allow for case closure.</p> <p>Appropriate Services are those that are provided to, or arranged for, the family (including any services for alternative caregivers) with the explicit goal of:</p> <ul style="list-style-type: none"> (1) addressing the case-specific safety concerns of the child(ren) and/or risk of child abuse/neglect, and (2) doing so within a timeframe needed to prevent a child’s entry into foster care and/or re-entry after a reunification. As a guiding principle, appropriate services are: <ul style="list-style-type: none"> • Tailored to meet the specific needs of families; • Culturally appropriate with providers who can speak the language of the family; • Accessible to the family (consider hours of service and location, special accommodations needed for individuals with a disability, transportation, affordability of any costs/fees, onsite childcare/childcare needs, and wait lists); • Provided in a setting that is most effective and responsive to needs (consider availability of appropriate services offered by providers in community/neighborhood-based organizations and/or services offered in the home versus an office setting); and • Monitored to ensure that family needs are met. <p>In cases where there are NO safety issues or risk of harm to the child, and services are recommended that would benefit the family, they should be documented in the case decision summary and discussed with the family. Recommended services CANNOT include protective services that are needed to ensure the safety of the child. These services can include prevention services that the agency believes the</p>

Assessment Track: Family and Investigative Assessments

Protocol – What you must do	Guidance – How you should do it
<p>For all Family Assessments, the case finding will be reported to the Central Registry (DSS-5104) with no perpetrator information entered.</p>	<p>family might benefit from, but if they choose not to engage in them will not require CPS involvement.</p>
<p><u>INVESTIGATIVE ASSESSMENT</u></p> <p>INITIATION</p> <p>The interviewing sequence in an Investigative Assessment is:</p> <ul style="list-style-type: none"> ● All children living in the home; ● The non-perpetrating parent; ● The perpetrator; and then ● Collaterals <p>There are times when this order may not be feasible or the most appropriate. The county child welfare services agency must consider the individuals and allegations involved in each situation and must conduct the interviews in the order that is least likely to increase the risk of harm to the alleged victim child or other children in the home.</p> <p>The child must be interviewed:</p> <ul style="list-style-type: none"> ● Individually; and ● Under no circumstances in the presence of the person or persons alleged to have caused or allowed abuse and/or neglect. <p>For DV cases, refer to <u>DV initiation protocol</u>.</p>	<p>Efforts should be made to establish rapport with the child and to help the child feel comfortable in disclosing information about himself or herself and family.</p> <p>County child welfare workers should have another adult present when a full body assessment is necessary.</p> <p>During a CPS Assessment, information received may reveal that the perpetrator is not a parent or caretaker. It is still important to interview the alleged perpetrator during the CPS Assessment, if possible. The alleged perpetrator may have information that is vital in helping to determine if the allegation is true. If other evidence indicates the harm was caused or allowed by the parent or caretaker, an interview with the alleged perpetrator may give insight into whether the parents/caretaker provided adequate care and supervision.</p>

Assessment Track: Family and Investigative Assessments

Protocol – What you must do	Guidance – How you should do it
<p>CASE-DECISION MAKING</p> <p>The findings in an Investigative Assessment must be either substantiated or unsubstantiated.</p> <p>To make a case decision to substantiate, the answer to one or more of the following questions must be “yes” to one of the 4 questions on the CPS Assessment Documentation Tool. See Making the Case Decision.</p> <p>When a report of neglect is being completed using the Investigative Assessment track, there are two points to consider when deciding on the case finding:</p> <ul style="list-style-type: none"> ● The first decision is to determine if the case decision is to be substantiated; and ● The second decision for substantiations of neglect is to determine if the neglect is “serious.” A definition for “serious neglect,” as well as other information regarding the Responsible Individuals List, can be found in Appendix 1, CPS Data Collection in the NC Child Welfare manual. <p><u>When the Identity of the Perpetrator Is Unknown</u></p> <p>There are instances when a child has been abused and/or neglected but the identity of the perpetrator cannot be determined. In such situations, there must be a case decision that ensures the ongoing safety of the child and data entries must reflect that the perpetrator is “unknown.”</p>	<p>This scenario should be a rare occurrence. County child welfare agencies are encouraged to consider if there are additional case activities that would help to identify a perpetrator before using this option.</p>

Responsible Individual List

<p>decision includes ongoing service provision by the county child welfare agency, the notice to the individual must also include language that indicates the agency will continue to work with the family on an involuntary basis;</p> <ul style="list-style-type: none">• A statement, in accordance with N.C.G.S. §7B-320(c)(3), informing the individual that unless the individual petitions for a judicial review within 15 calendar days, their name will be placed on the RIL;• A clear description of the actions the individual must take to request a judicial review to prevent the placement of their name on the RIL. These instructions must include a copy of the Petition for Judicial Review, but no instructions on how to file the petition; and• That the North Carolina Department of Health and Human Services may provide information from that list to child caring institutions, child-placing agencies, group home facilities, and other providers of foster care, child care, or adoption services (including the Guardian ad Litem Program) that need to determine the fitness of individuals to care for or adopt children as permitted by N.C.G.S. §7B-311. <p>The county child welfare worker must make face-to-face contact with the alleged responsible individual after the case decision, in an expeditious manner, to explain the reason for the substantiation and to provide written notice of the potential for their name to be placed on the RIL.</p> <p>If it is not possible to make face-to-face contact with the alleged responsible individual to deliver the written notice, the county child welfare worker must make diligent and persistent efforts to make contact. However, if the county child welfare worker is unsuccessful in contacting the alleged responsible individual to provide personal written notice within 15 calendar days of the case decision, the notice must be sent by registered or certified mail, return receipt requested, and addressed to the individual at the individual’s last known address.</p>	<p>he or she received the case decision / RIL placement notice and the date received.</p> <p>Please see Appendix 1 CPS Data Collection for an example of the case decision letter to be provided to an alleged responsible individual.</p>
--	--

Responsible Individual List

<p>If the alleged responsible individual is a non-caretaker but a case decision has been made to substantiate for human trafficking, the child welfare worker must work with the local law enforcement agency and district attorney to determine the safest way to notify the alleged responsible individual. Notification must not be provided if it is likely to:</p> <ul style="list-style-type: none">• Cause mental or physical harm or danger to the juvenile.• Undermine an ongoing or future criminal investigation.• Jeopardize the State's ability to prosecute the identified responsible individual. <p>Documentation must be provided including the reason when it is determined that a notification will not be made.</p> <p>If the case decision/RIL placement notice is returned as undeliverable or signed by someone other than the alleged responsible individual, the individual's name cannot be placed on the RIL, unless the procedures of NCGS 7B-320(a1) are used. If the county agency cannot show that the individual has been notified, then the individual cannot be placed on the RIL until an ex-parte hearing is held. A district court judge will determine if diligent efforts were made to find the individual.</p> <p>Non-caretakers who are perpetrators of human trafficking can be placed on the RIL without notification if they have been convicted of human trafficking. A conviction must include the child victimized by human trafficking that CPS had also substantiated as being abused.</p> <p>Note: If there is a lack of identifying information for the alleged responsible individual, but the individual did receive the notice, then they may be placed on the name on the RIL with at least one identifier.</p> <p>All data on the 5104 is to be entered within ten working days after a case decision. The Responsible Individual's List form, DSS-5104a (http://info.dhhs.state.nc.us/olm/forms/dss/dss-5104a.pdf) to place an individual on the RIL must be completed by the child welfare worker once all requirements have been met. This includes a court ruling if a judicial review is conducted.</p>	<p>Child welfare only responds to reports regarding non-caretakers when the allegations include concerns for human trafficking. The only substantiation of a non-caretaker would be for human trafficking.</p>
---	--

Responsible Individual List

OUT OF STATE NOTIFICATIONS

In instances when a report is received but the incident occurred out of state or the alleged responsible individual lives out of state the response has been outlined below:

- When a report indicates that both the child and parent and/or caretaker reside in NC, but the location of the alleged maltreatment occurred out of state and the child and parent or caretaker reside in NC, the county of residence must conduct the assessment. If the case is substantiated the named perpetrator cannot be placed on the RIL because they are not eligible for the judicial review process.
- When maltreatment is alleged to have occurred to a child who is a resident of NC while out of state by an individual who is not a NC resident, the named perpetrator cannot be placed on the RIL because they are not eligible for the judicial review process.
- When a report alleges that a resident child was maltreated in NC by a parent and/or caretaker who is not a NC resident and the allegations are substantiated, the named perpetrator can be placed on the RIL.

JUDICIAL REVIEW PROCESS

The judicial review process is a district court level hearing on a petition, initiated by the alleged responsible individual for a review of the director’s decision to identify the individual as a responsible individual and to place their name on the RIL. The judicial review process is established by NCGS § 7B-323 and NCGS § 7B-324.

The Judicial Review Petition, AOC-J-131 (<http://www.nccourts.org/Forms/Documents/951.pdf>), must be filed within 15 days of receipt of the case decision notification in the district in which the abuse and/or serious neglect occurred. Should that timeframe expire, the right to request a judicial review is forfeited, and the individual’s name will be placed on the RIL, unless the district court in that county allows a judicial review petition filed outside of that 15-day

If at any time during the judicial review process, the individual seeking the judicial review is named as a respondent in a juvenile court case or a defendant in a criminal court case resulting from the same incident, the court may stay the judicial review process. The juvenile court action may no longer be consolidated with the RIL judicial review.

Responsible Individual List

<p>timeframe to be heard because it serves the interest of justice or for extraordinary circumstances, as per G.S. § 7B323(e).</p> <p>Once a judicial review has been calendared, the county director must review all records, reports, and other information gathered and used during the CPS Assessment case decision process. The director must determine if there is sufficient evidence to support a determination that the individual abused and/or seriously neglected the juvenile and is a responsible individual. If the decision is to proceed a written statement of the director’s determination must be made and delivered to the responsible individual.</p> <p>Note: If a determination is made that there was not sufficient evidence to support a determination of abuse and/or serious neglect, a statement must be provided to the individual and the clerk of court including language indicating that the agency will not be placing the individual on the RIL and any additional findings such as involuntary services, if necessary.</p> <p><u>CONFLICT OF INTEREST</u></p> <p>When another county, because of a conflict of interest, conducts the CPS Assessment, the request for judicial review following notification of an alleged responsible individual must still be made to the district court in the county where the abuse and/or serious neglect arose (where the incident occurred). However, it is the director of the county that made the case decision of abuse and/or serious neglect and responsible individual determination who is responsible for reviewing that case decision upon notification of a pending judicial review and to present evidence in the judicial review held in the county where the report arose.</p> <p><u>RELEASE OF RIL INFORMATION</u></p> <p>NCGS § 7B-311(b) only authorizes the use of the RIL “to determine the fitness of individuals to care for or adopt children.” The RIL may not be used as part of the employment process unless the employee will have the responsibility of caring for</p>	<p>For additional, detailed information on the court process for the judicial review, please refer to Appendix 1 CPS Data Collection.</p> <p>Upon receipt of the director’s letter finding no abuse or serious neglect, the courts will cancel the judicial review hearing with notice of cancellation given to the petitioner.</p> <p>With the exception of searches conducted by the county child welfare agencies, all requests for searches of the Responsible Individuals List should be submitted in writing to the Division of Social Services by “authorized persons,” who are strongly considering the responsible individual for</p>
--	--

Responsible Individual List

<p>children, either on a temporary or permanent basis. RIL checks are mandated for foster parent and adoptive applicants and kinship care providers.</p> <p>Any requests for information, by authorized users other than county child welfare agencies, from the RIL must be directed to the North Carolina Division of Social Services (NCDSS) using the Request for Information from the Responsible Individuals List form (http://info.dhhs.state.nc.us/olm/forms/dss/dss-5268-ia.pdf). Authorized individuals on staff at county child welfare agencies will have direct access to the RIL.</p>	<p>employment or volunteer services that involve the care of or adoption of children.</p> <p>Because the RIL could affect the individual’s employment or ability to foster or adopt, information maintained on the RIL should be current and updated within the timeframes established.</p>
--	---

Documentation

Protocol – What you must do

Documentation of the CPS Assessment must:

- Include the Structured Documentation Instrument for CPS Assessments DSS-5010 must be used to:
 - Describe actions taken (contacts made) and services provided;
 - Include a description of the ongoing assessment of risk, safety, and health or well-being of the child;
 - Support the rationale for the involvement of the county child welfare services agency and service delivery on an ongoing basis;
 - The basis for what the county child welfare services agency considers sufficient contact;
 - Describe all diligent efforts to make contacts, if not achieved;
 - Describe the family’s progress or barriers toward addressing safety threats or risk;
 - Include supervisor/child welfare worker and group/unit case conferences, including any two-level decisions made;
 - Provide justification for any missed policy or protocol requirements (missed timeframes, etc.);
 - Document any new allegations and actions taken;
- Include any other efforts by the county child welfare services agency to achieve child safety and protection, family preservation, and prevention of future abuse, neglect, and/or dependency;
- Include completion of the North Carolina Safety Assessment ([DSS-5231](#));
- Include completion of the North Carolina Family Risk Assessment of Abuse / Neglect ([DSS-5230](#));
- Include completion of the North Carolina Family Assessment of Strengths and Needs ([DSS-5229](#)); and
- Be current within seven calendar days.

The following information must be included for each documentation entry regarding a contact or attempted contact:

- Date of each contact and name of each person contacted;
- Purpose of the contact;
- Significant family/child/parent issues;
- Type of contact (phone, face-to-face, home visit, etc.) and location for all face-to-face contacts;
- Individual interview with each child present;
- Observations regarding each person and the environment for face-to-face contacts; and/or
- Diligent efforts to make a contact and date of the efforts, what were efforts to make this contact (telephone call, home visit but no one home, etc.).

Documentation

Protocol – What you must do
<p>When a child(ren) must be removed from the home (See “Filing a Petition” in Cross Function Topics in the NC Child Welfare manual), the case record must document that the county child welfare services agency completed the following:</p> <ul style="list-style-type: none"> ● Efforts were made to protect the child in their own home and to prevent out-of-home placement; ● Relatives were assessed for willingness and ability to care for the child(ren) and whether such placement would be in the child’s best interests; ● Compliance with the following requirements occurred when temporary custody is initiated: <ul style="list-style-type: none"> ○ That the child would have been endangered if the county child welfare worker first had to obtain a court order; ○ That the child was returned to the parents or persons from whom the child was removed unless a petition or motion for review was filed and an order for secure or non-secure custody was obtained; and ○ That the parents were notified that they could be with the child(ren) while the court determined the need for secure or non-secure custody. ● The juvenile petition alleges the conditions that required court jurisdiction; ● The non-secure custody order gives specific sanction to a placement other than a licensed provider; that the juvenile petition was filed because the child(ren) was at imminent risk; and that a hearing was held within seven calendar days; and ● If a child is taken into agency custody because of an adjudication of undisciplined behavior or delinquency, the required language is in the court order or, if appropriate language is not included, that the agency filed a motion to have such language included in the court order. <p>The county child welfare services agency must submit a report of alleged abuse, neglect, and/or dependency cases or child fatalities that are the result of alleged maltreatment to the Central Registry. The county child welfare services agency fulfills this requirement by submitting one Report to Central Registry / CPS Application (DSS-5104) to the North Carolina Division of Social Services for each victim child or an action through NC FAST. When completing the Report to the Central Registry/CPS Application (DSS-5104), only one DSS-5104 per child is submitted (all reports open during an assessment are compiled into one case decision) for an assessment. All services provided to or referred for the family as the result of the CPS Assessment are to be documented on the DSS-5104 in Field 24. This documents service needs that began and continued for the child between the date of the CPS report and up to 90 calendar days after the case decision.</p> <p>Case documentation must include completion and processing of a DSS-5027 (to be processed at the initiation and closure of every assessment) for every identified victim child.</p> <p>See “Documentation” in Cross Function Topics in the NC Child Welfare manual for definitions and additional protocol and guidance.</p>

END OF CPS FAMILY AND INVESTIGATIVE ASSESSMENTS POLICY, PROTOCOL, & GUIDANCE SECTION